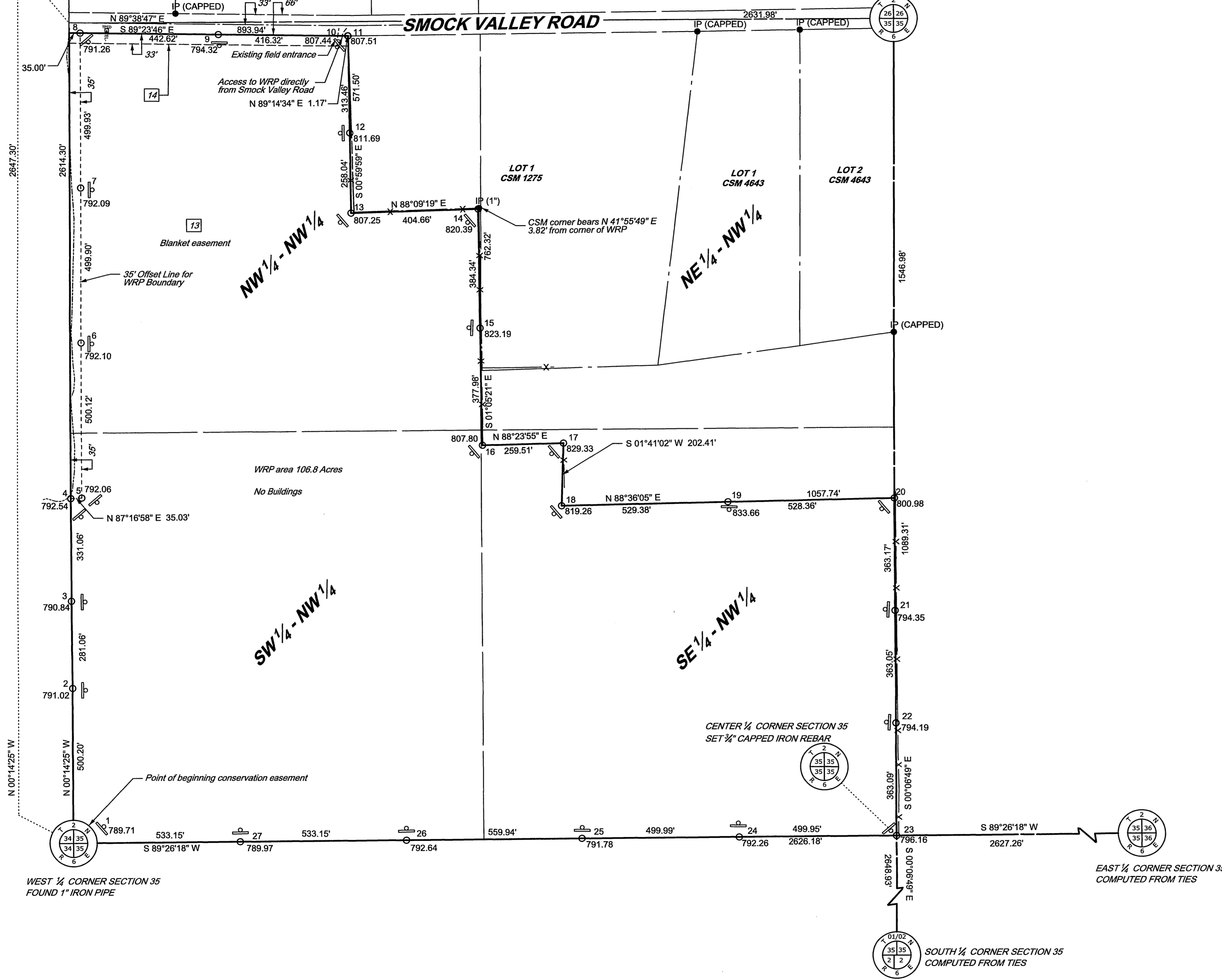
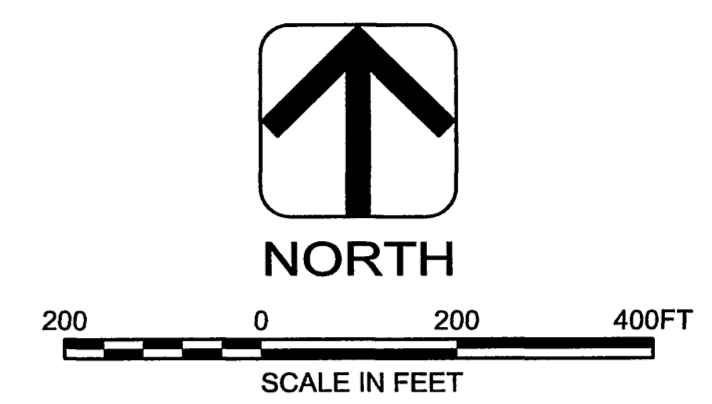
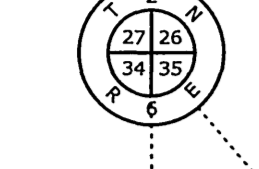


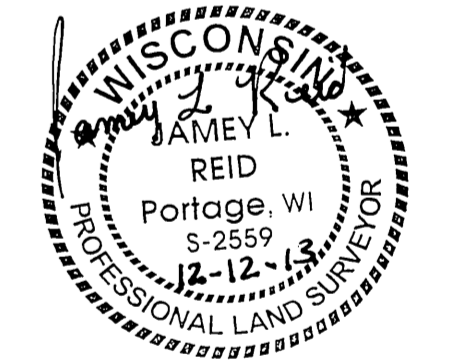
Field April 14, 2014 Use 14 pg 60

Ayres_pdr.pitcfig ES_Standard.tbl 12/12/2013 M:\SURVEYS\UR\26-0633.00 NFCS Boundary Surveys\2013 projects\26-0633.07\Green County\Winkler\CADD Files\Winkler_Sheet 3.dgn

NORTHEAST CORNER SECTION 35 FOUND P.K. NAIL



Point	Northing	Easting	Latitude	Longitude
1	220022.08	2033284.38	42°36'12.27924"N	89°45'33.78219"W
2	220522.26	2033282.28	42°36'17.21985"N	89°45'33.79097"W
3	220803.32	2033281.10	42°36'19.99606"N	89°45'33.79591"W
4	221134.38	2033279.72	42°36'23.26616"N	89°45'33.80159"W
5	221136.04	2033314.71	42°36'23.28156"N	89°45'33.33366"W
6	221636.15	2033312.61	42°36'28.22147"N	89°45'33.34243"W
7	222136.03	2033310.51	42°36'33.15912"N	89°45'33.35122"W
8	222635.96	2033308.42	42°36'38.09725"N	89°45'33.35986"W
9	222631.29	2033751.01	42°36'38.03846"N	89°45'27.44162"W
10	222626.90	2034167.30	42°36'37.98311"N	89°45'21.87505"W
11	222626.92	2034168.47	42°36'37.98327"N	89°45'21.85940"W
12	222313.51	2034173.94	42°36'34.88739"N	89°45'21.79852"W
13	222055.51	2034178.44	42°36'32.33886"N	89°45'21.74844"W
14	222068.54	2034582.89	42°36'32.45584"N	89°45'16.33965"W
15	221684.27	2034590.20	42°36'28.65999"N	89°45'16.25703"W
16	221306.36	2034597.38	42°36'24.92896"N	89°45'16.17590"W
17	221313.61	2034856.79	42°36'24.89101"N	89°45'12.70692"W
18	221111.30	2034850.84	42°36'22.99286"N	89°45'12.79448"W
19	221124.22	2035380.05	42°36'23.10497"N	89°45'05.71771"W
20	221137.11	2035908.25	42°36'23.21669"N	89°44'58.65444"W
21	220773.94	2035908.97	42°36'19.62944"N	89°44'58.65940"W
22	220410.90	2035909.69	42°36'16.04348"N	89°44'58.66434"W
23	220047.82	2035910.41	42°36'12.45713"N	89°44'58.66929"W
24	220042.92	2035410.49	42°36'12.42350"N	89°45'05.35378"W
25	220038.02	2034910.53	42°36'12.38976"N	89°45'12.03879"W
26	220032.53	2034350.63	42°36'12.35182"N	89°45'19.52527"W
27	220027.31	2033817.50	42°36'12.31564"N	89°45'26.65380"W



Note: The recorded description on the property of which the easement is located on is referenced in Title Commitment No. GR11433 by Chicago Title Insurance Company with a title commitment date of July 1, 2013.

LEGEND	
FOUND IRON PIPE	IP (SIZE)
FOUND IRON BAR	IB (SIZE)
SET 3/4" X 24" CAPPED IRON REBAR WITH PLASTIC CAP STAMPED AYRES ASSOC. RLS-2559	SET FOUND
SECTION LINE	
QUARTER LINE	
SIXTEENTH LINE	
RIGHT OF WAY LINE	
PROPERTY LINE	
EXISTING EASEMENT	
RECORDED AS DATA (N80°00'00"E 123.87')	
PROPOSED ACCESS EASEMENT	
USDA/NRCS BOUNDARY	
FENCE	X X X
WATER'S EDGE	---
UNDERGROUND ELECTRIC	—UE— UE
OVERHEAD ELECTRIC	—OHE— OHE
POWER POLE	□
TRANSFORMER	ETRAN
UNDERGROUND TELEPHONE	—TEL— TEL
TELEPHONE POLE	⊗
TELEPHONE PEDESTAL	TEPD
GAS UTILITY	—UG— UG
OVERHEAD UTILITY	—OH— OH
LATTICE TOWER	⊗
SPOT ELEVATION	±28.55

NRCS CONTRACT No. 66-5F48-13-01DC2

SURVEY BY	JV JRC	BOOK NO	647
DR BY	JCF	JOB NO	26-0633.07
CHK BY	JCF	DATE	DECEMBER 12, 2013
NO	DATE	REVISION	

US DEPARTMENT OF AGRICULTURE
KEVIN R. WINKLER AND KRISTINE M. WINKLER PROPERTY
GREEN COUNTY, WISCONSIN



MAP OF BOUNDARY SURVEY OF USDA-NRCS WRP CONSERVATION EASEMENT

SHEET NO. 3 OF 3