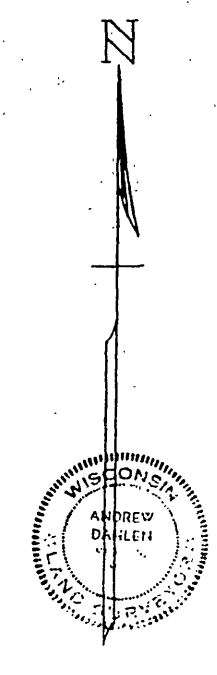


VILLAGE OF NEW GLARUS AMENDED ASSESSOR'S PLAT

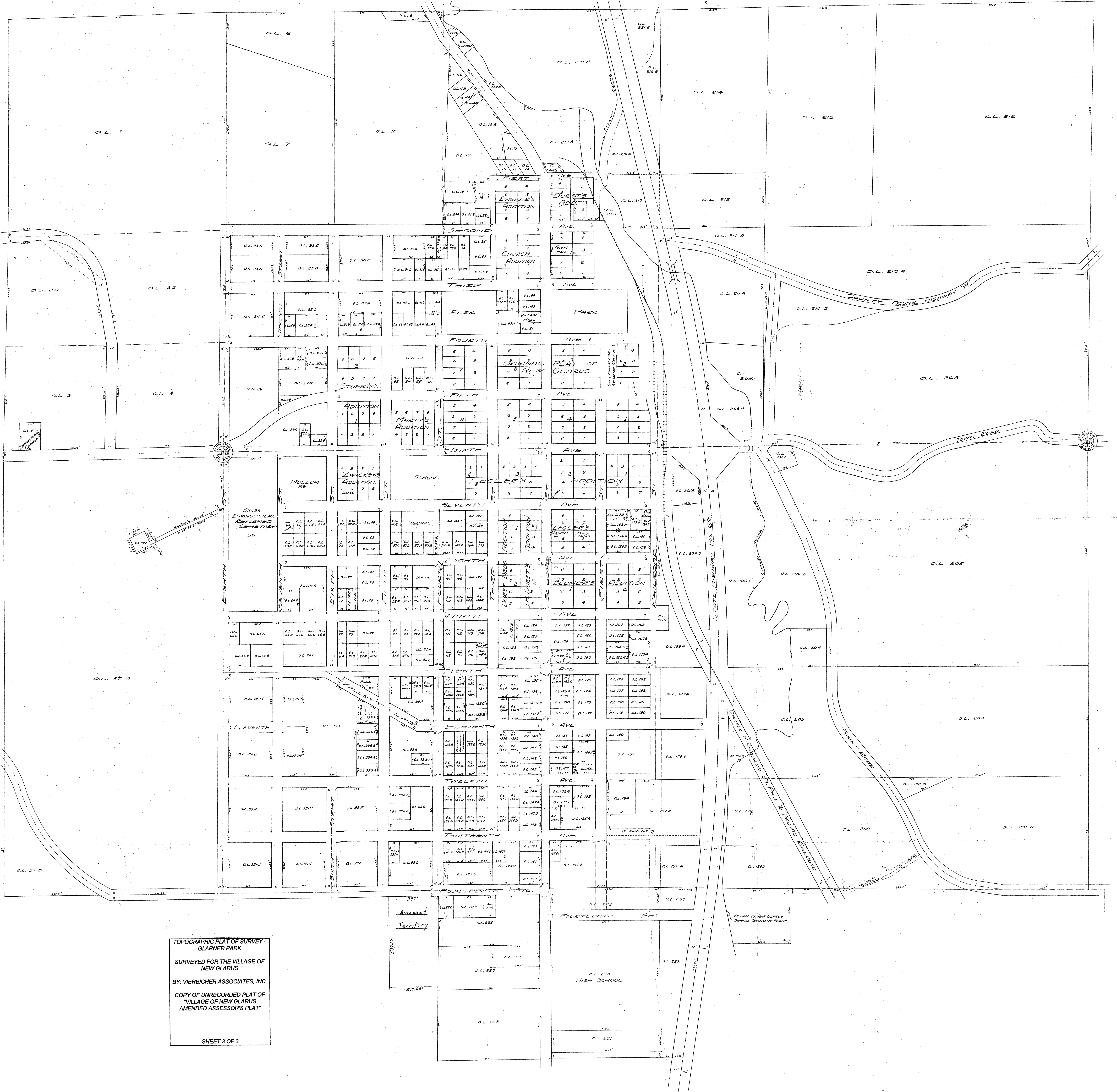


LEGEND:
1. Shaded in Dark Green
2. Shaded in Light Green
3. Shaded in Yellow

SCALE: 1/2" = 100'

ANDREW CHAMBERLAIN, INC.
MADISON, WISCONSIN
DATE: 1982

Revised Feb. 18, 1970 to correct error of O.L. 29-61, etc. - P.M.
Revised March 15, 1982 to show O.L. 272 of Assessor's Plat P.M.



TOPOGRAPHIC PLAT OF SURVEY -
GLARNER PARK
SURVEYED FOR THE VILLAGE OF
NEW GLARUS
BY: VIERBICHER ASSOCIATES, INC.
COPY OF UNRECORDED PLAT OF
"VILLAGE OF NEW GLARUS
AMENDED ASSESSOR'S PLAT"
SHEET 3 OF 3