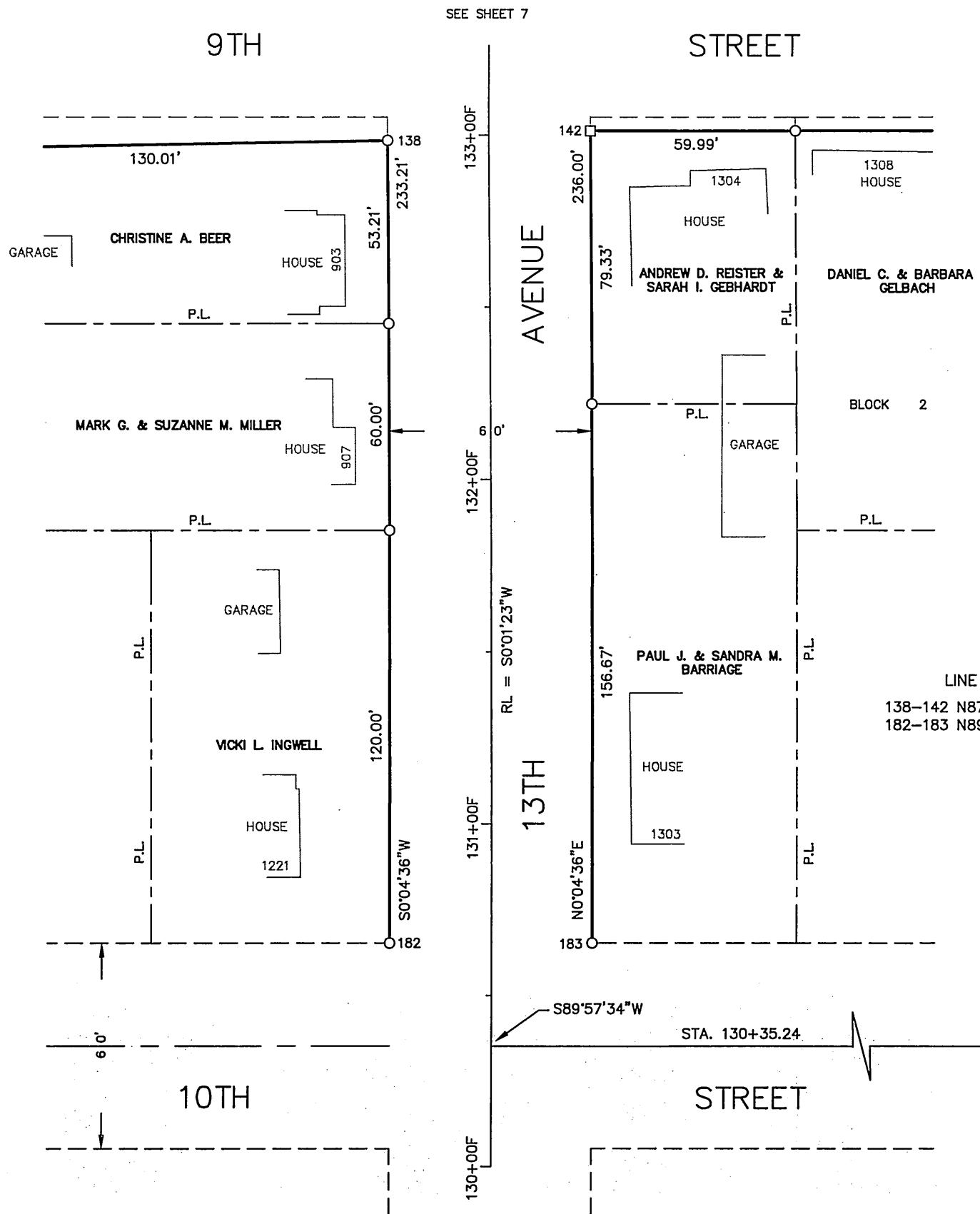
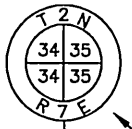


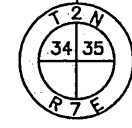
WISCONSIN  
 ★ TODD E. HASSE ★  
 S-2228  
 MONROE, WI  
 LAND SURVEYOR  
 November 24th, 2013



CAST ALUMINUM MON.  
 N = 137,991.559  
 E = 611,093.986



CAST ALUMINUM MON.  
 N = 135,357.045  
 E = 611,114.716



Will Rev. 19, 2013 Use 14 pg 52

**HASSE SURVEYING**  
 W5820 ILIFF ROAD  
 MONROE, WI 53566  
 (808) 325-5321 PHONE  
 (808) 329-5321 FAX