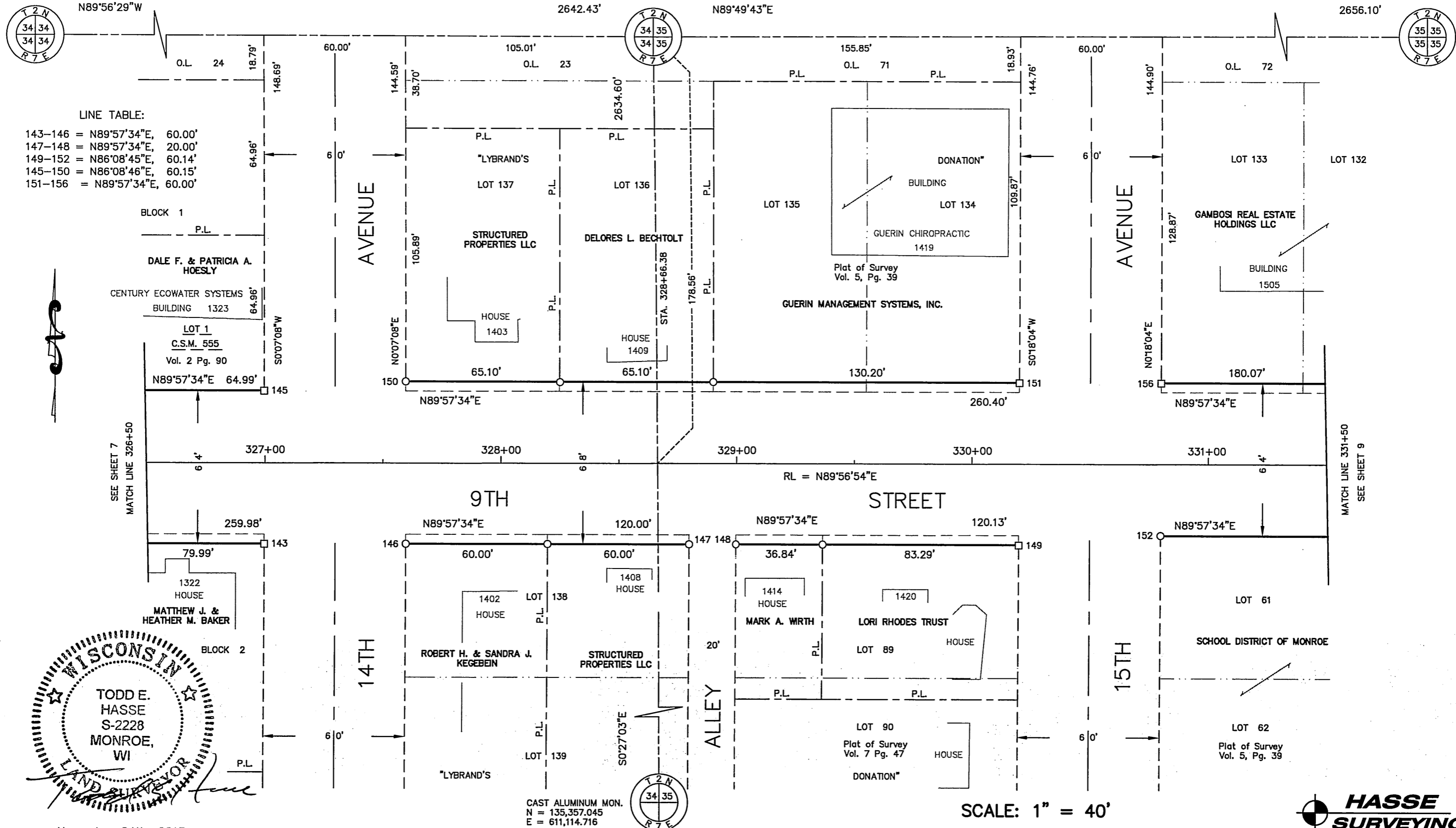


COMPUTED LOCATION
 N = 137,994.267
 E = 608,451.562

CAST ALUMINUM MON.
 N = 137,991.559
 E = 611,093.986

1 1/4" IRON ROD
 N = 137,999.506
 E = 613,750.071



LINE TABLE:

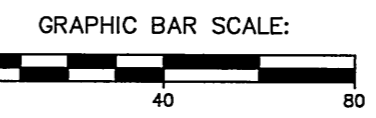
143-146	= N89°57'34"E,	60.00'
147-148	= N89°57'34"E,	20.00'
149-152	= N86°08'45"E,	60.14'
145-150	= N86°08'46"E,	60.15'
151-156	= N89°57'34"E,	60.00'

BLOCK 1
 P.L.
 DALE F. & PATRICIA A. HOESLY
 CENTURY ECOWATER SYSTEMS BUILDING 1323
 LOT 1
 C.S.M. 555
 Vol. 2 Pg. 90
 N89°57'34"E 64.99'

WISCONSIN
 TODD E. HASSE
 S-2228
 MONROE, WI
 LAND SURVEYOR

November 24th, 2013

SCALE: 1" = 40'



Filed Dec. 19, 2013 use pg 48