

COMPUTED LOCATION  
 N = 137,994.267  
 E = 608,451.562

P.I. = 315+83.98  
 N = 137,998.867  
 E = 609,879.837  
 R = 185.00'  
 $\Delta = 46^{\circ}58'46''$   
 L = 151.69'  
 L.C. = 147.48'  
 L.C.B. = S66°31'37"E

P.I. = 318+44.56  
 N = 137,801.744  
 E = 610,063.896  
 R = 185.00'  
 $\Delta = 48^{\circ}02'40''$   
 L = 155.13'  
 L.C. = 150.62'  
 L.C.B. = S67°03'34"E

LINE TABLE:

123-124	= S 0°04'12"W, 12.25'
124-132	= S 0°04'12"W, 60.00'
132-133	= N89°57'34"E, 60.00'
133-134	= N89°57'34"E, 39.29'
135-136	= N88°55'06"E, 141.79'
127-128	= S89°56'29"E, 86.89'

Plat of Survey  
 By: Anthony Thousand  
 Dated: 12-22-1966

CURVE 121 - 122  
 R = 164.60'  
 $\Delta = 45^{\circ}14'00''$   
 L = 129.95'  
 L.C. = 126.60'  
 L.C.B. = S67°25'26"E

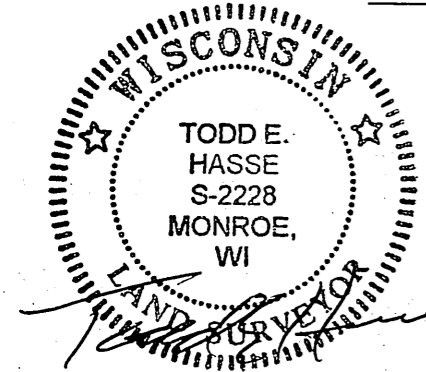
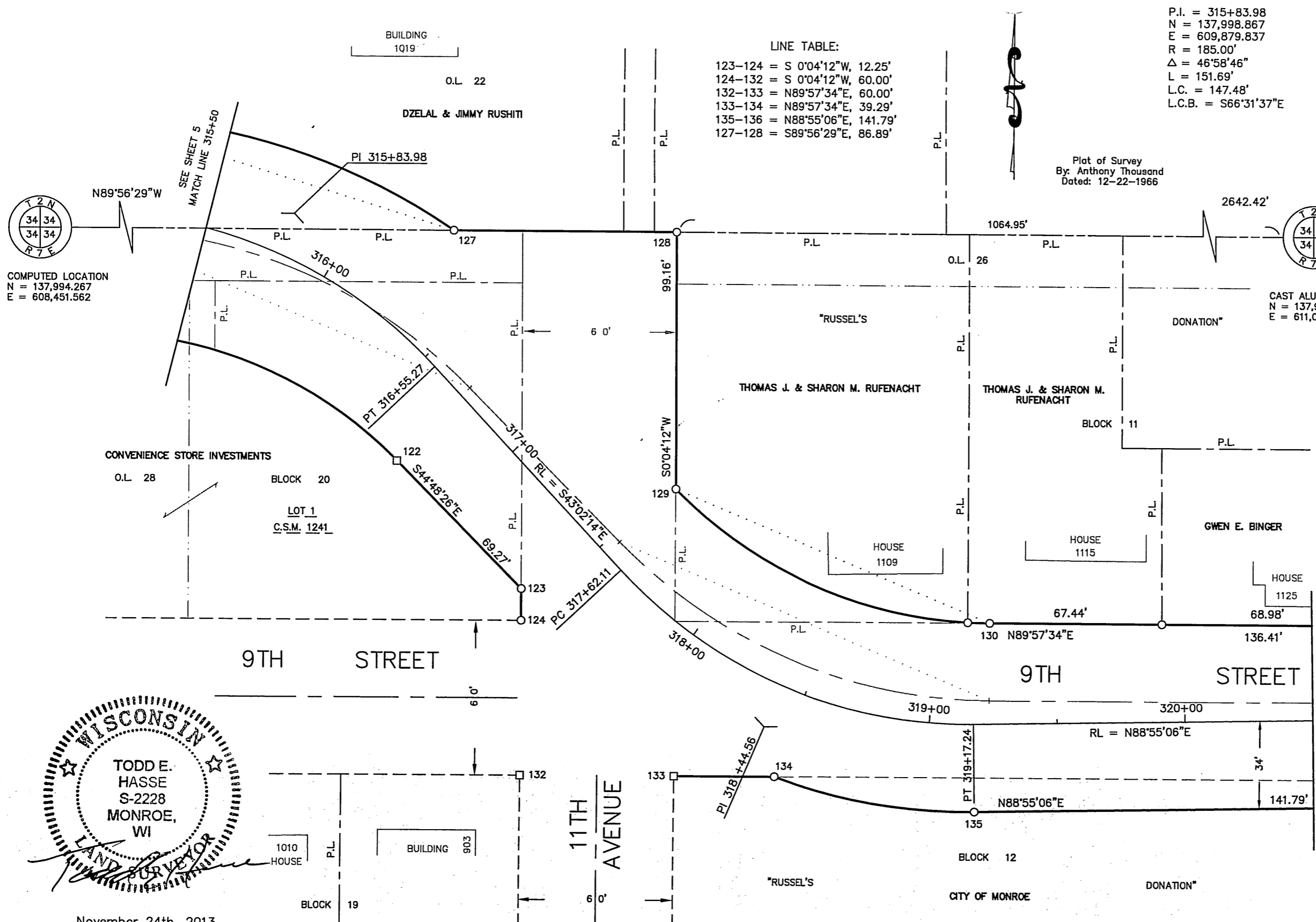
CURVE 134 - 135  
 R = 219.00'  
 $\Delta = 21^{\circ}02'44''$   
 L = 80.44'  
 L.C. = 79.99'  
 L.C.B. = S80°33'32"E

CURVE 126 - 127  
 R = 247.60'  
 $\Delta = 34^{\circ}09'32''$   
 L = 147.62'  
 L.C. = 145.44'  
 L.C.B. = S72°57'40"E

CURVE 129 - 130  
 R = 174.60'  
 $\Delta = 44^{\circ}58'32''$   
 L = 137.06'  
 L.C. = 133.56'  
 L.C.B. = S67°33'10"E

RUFENACHT (1109)  
 R = 174.00'  
 $\Delta = 42^{\circ}10'18''$   
 L = 128.51'  
 L.C. = 125.63'  
 L.C.B. = S66°09'03"E

RUFENACHT (1115)  
 R = 174.00'  
 $\Delta = 2^{\circ}48'14''$   
 L = 8.54'  
 L.C. = 8.54'  
 L.C.B. = S88°38'19"E

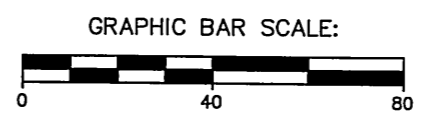


November 24th, 2013

JOB NO. 13108  
 DRAWING C:\CITYOFMONROE\8TH&9THSTREET\13108-6.DWG

SHEET 6 OF 12

SCALE: 1" = 40'



Filed Dec. 19, 2013 Vol 14 pg 46