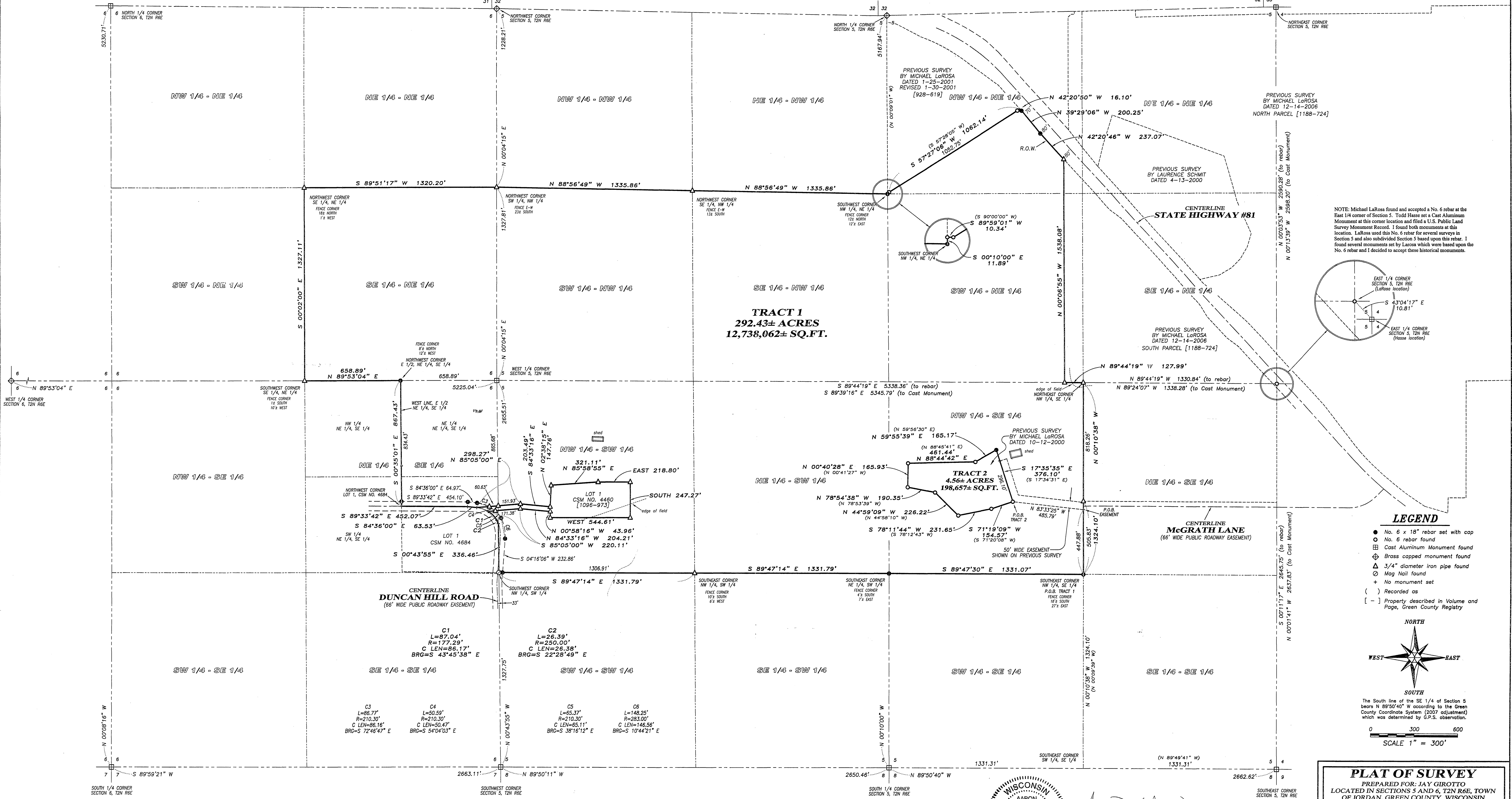
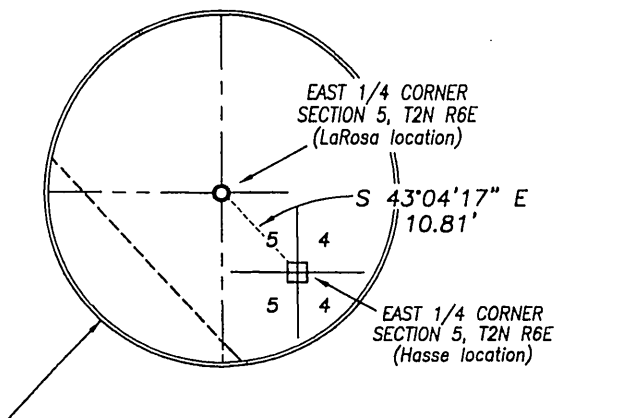


Filed April 23, 2013 04:15 PM 134

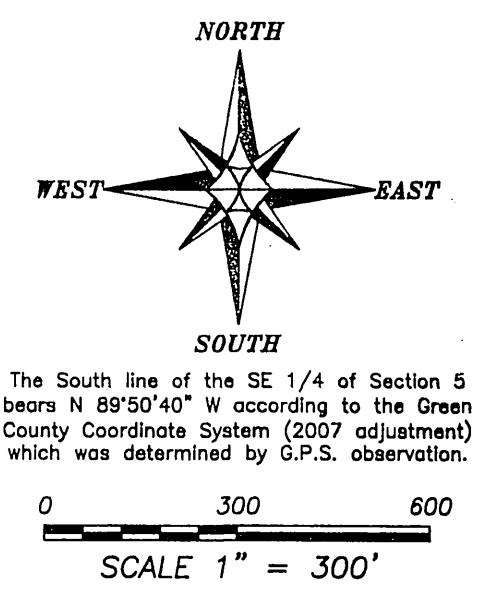


NOTE: Michael LaRosa found and accepted a No. 6 rebar at the East 1/4 corner of Section 5. Todd Hasse set a Cast Aluminum Monument at this corner location and filed a U.S. Public Land Survey Monument Record. I found both monuments at this location. LaRosa used this No. 6 rebar for several surveys in Section 5 and also subdivided Section 5 based upon this rebar. I found several monuments set by LaRosa which were based upon the No. 6 rebar and I decided to accept these historical monuments.



**LEGEND**

- No. 6 x 18" rebar set with cap
- ⊕ No. 6 rebar found
- ⊞ Cast Aluminum Monument found
- ⊕ Brass capped monument found
- ⊕ 3/4" diameter iron pipe found
- ⊕ Mag Nail found
- + No monument set
- ( ) Recorded as
- [ - ] Property described in Volume and Page, Green County Registry



**PLAT OF SURVEY**  
 PREPARED FOR: JAY GIROTTO  
 LOCATED IN SECTIONS 5 AND 6, T2N R6E, TOWN OF JORDAN, GREEN COUNTY, WISCONSIN

**Austin Engineering LLC**  
 4211 HWY 81 E  
 LANCASTER, WI 53813  
 PHONE 608-723-6363  
 FAX 608-723-6702

JOB NO: 136048  
 G:\PLAT\T2NR6E\05\136048-GIROTTO  
 FIELDBOOK: TDSR  
 DRAWN BY: AJ AUSTIN  
 CREW: SWA-AJA  
 SHEET 1 OF 3



ALL PLANS THAT DO NOT SHOW A SEAL IMPRINT IN RED INK MAY CONTAIN UNAUTHORIZED ALTERATIONS. THE CERTIFICATION CONTAINED ON THIS DOCUMENT SHALL NOT APPLY TO ANY COPIES. DATED: 4-14-2013.