

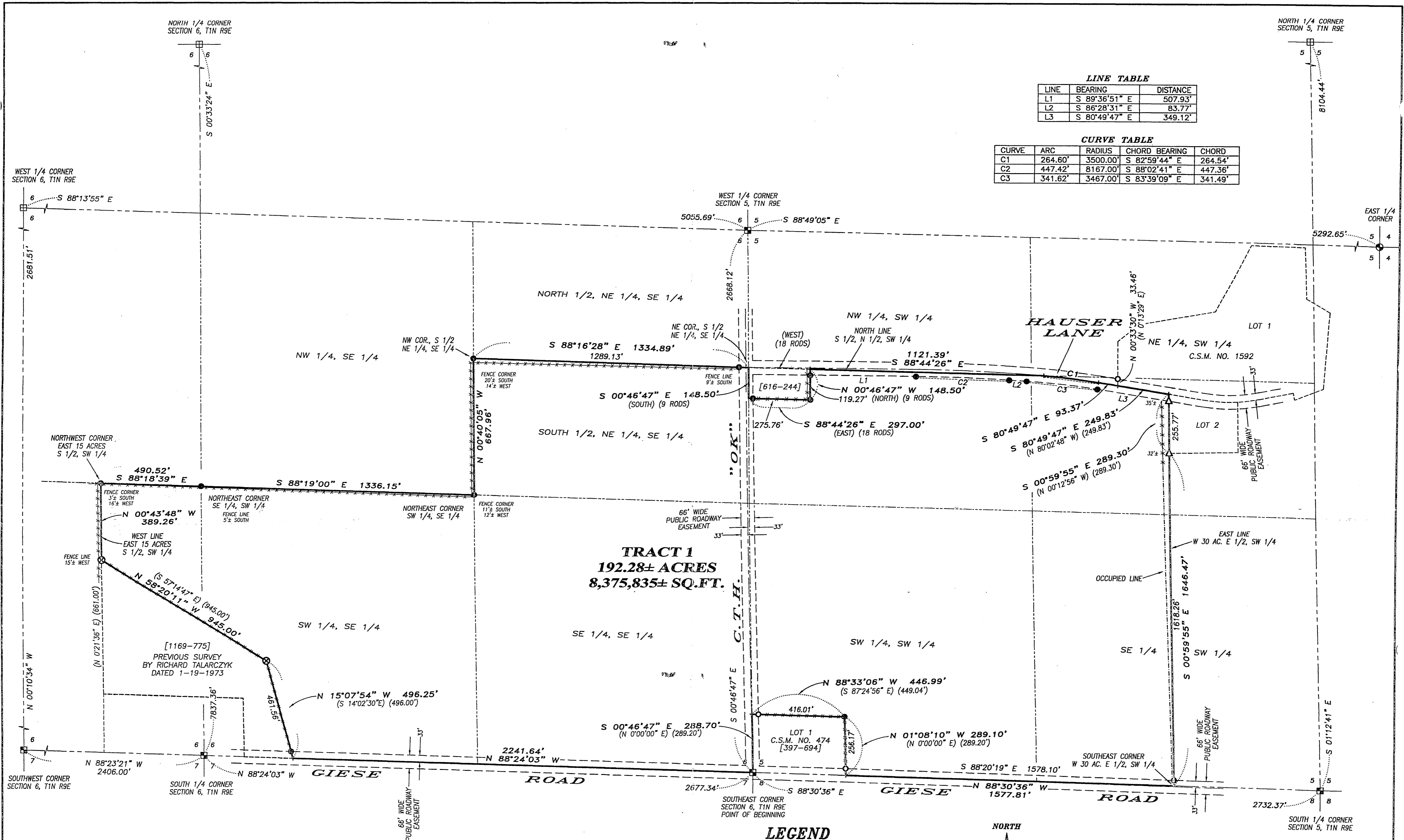
101 Pd Oct 25 2012 Ltr 13 Pg 101

LINE TABLE

LINE	BEARING	DISTANCE
L1	S 89°36'51" E	507.93'
L2	S 86°28'31" E	83.77'
L3	S 80°49'47" E	349.12'

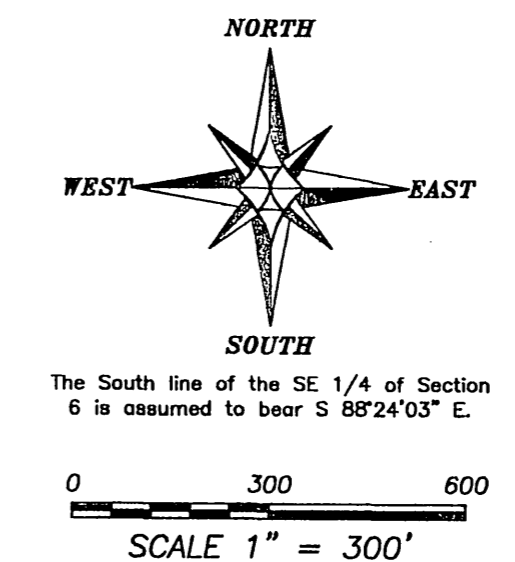
CURVE TABLE

CURVE	ARC	RADIUS	CHORD BEARING	CHORD
C1	264.60'	3500.00'	S 82°59'44" E	264.54'
C2	447.42'	8167.00'	S 88°02'41" E	447.36'
C3	341.62'	3467.00'	S 83°39'09" E	341.49'

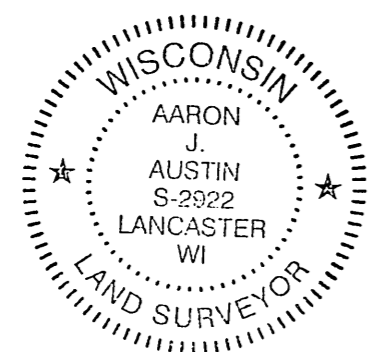


TRACT 1
192.28± ACRES
8,375,835± SQ. FT.

- LEGEND**
- ⊙ No. 8 x 24" rebar set
 - ⊙ No. 6 x 18" rebar set with cap
 - ⊙ No. 6 rebar found
 - ⊙ No. 7 rebar found
 - ⊠ Cast Aluminum Monument found
 - ⊠ Brass Cap in Concrete found
 - △ 1" diameter iron pipe found
 - + No monument set
 - () Recorded as
 - [-] Property described in Volume and Page, Green County Registry
 - - - Approximate fence



Aaron J. Austin
 ALL PLANS THAT DO NOT SHOW A SEAL IMPRINT IN RED INK MAY CONTAIN UNAUTHORIZED ALTERATIONS. THE CERTIFICATION CONTAINED ON THIS DOCUMENT SHALL NOT APPLY TO ANY COPIES. DATED: 10-8-2012.



PLAT OF SURVEY
 PREPARED FOR: JAY GIROTTO
 LOCATED IN SECTIONS 5 AND 6, T1N R9E, TOWN OF SPRING GROVE, GREEN COUNTY, WISCONSIN

Austin Engineering LLC
 4211 HWY 81 E
 LANCASTER, WI 53813
 PHONE 608-723-6363
 FAX 608-723-6702
 austinengineeringllc.com

JOB NO: 12s210
 G:\T1N9E\06
 H:\PLAT\T1N9E\06\12s210-GIROTTO

FIELDBOOK: TDSR
 DRAWN BY: AJ AUSTIN
 CREW: BS-SB

SHEET 1 OF 2