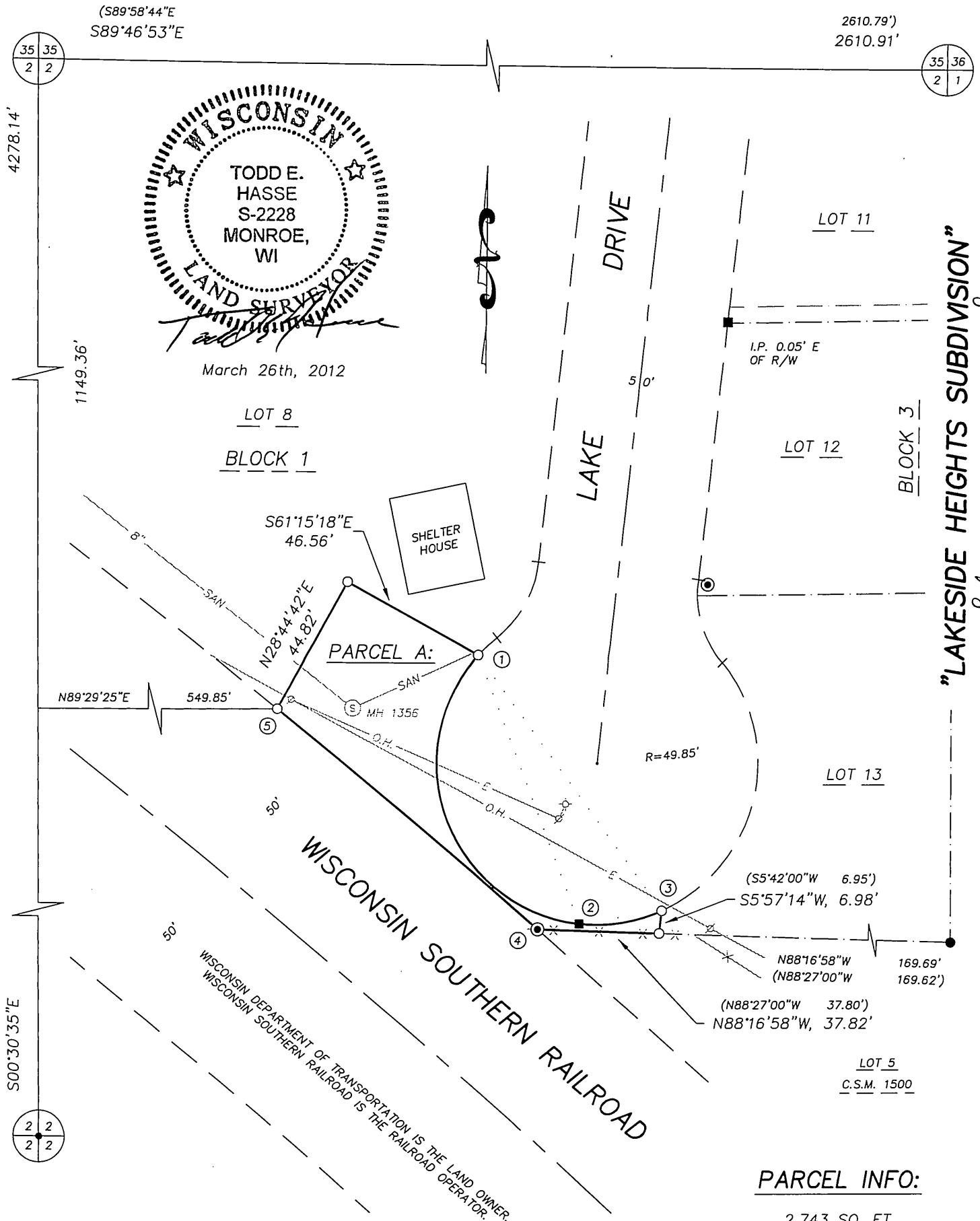


# PLAT OF SURVEY

PART OF LOT 8, BLOCK 1, LAKESIDE HEIGHTS SUBDIVISION, BEING PART OF F.L. 2, OF THE NE 1/4 OF SECTION 2, TOWN 1 NORTH, RANGE 7 EAST, CITY OF MONROE, GREEN COUNTY WISCONSIN.



Filed May 24, 2012 Lot 13 pg 67 "LAKESIDE HEIGHTS SUBDIVISION"

**PARCEL INFO:**

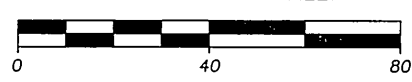
2,743 SQ. FT.  
(0.06 AC.)

**PREPARED FOR:**

City of Monroe  
c/o George E. Thompson  
1110 18th Avenue  
Monroe, WI 53566  
(608) 329-2595

**SCALE: 1" = 40'**

GRAPHIC BAR SCALE:



**HASSE SURVEYING**

W5820 ILIFF ROAD  
MONROE, WI 53566  
(608) 325-5321 PHONE  
(608) 329-5321 FAX