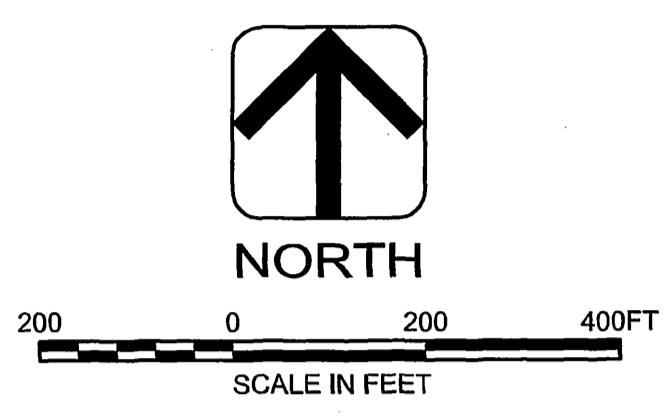
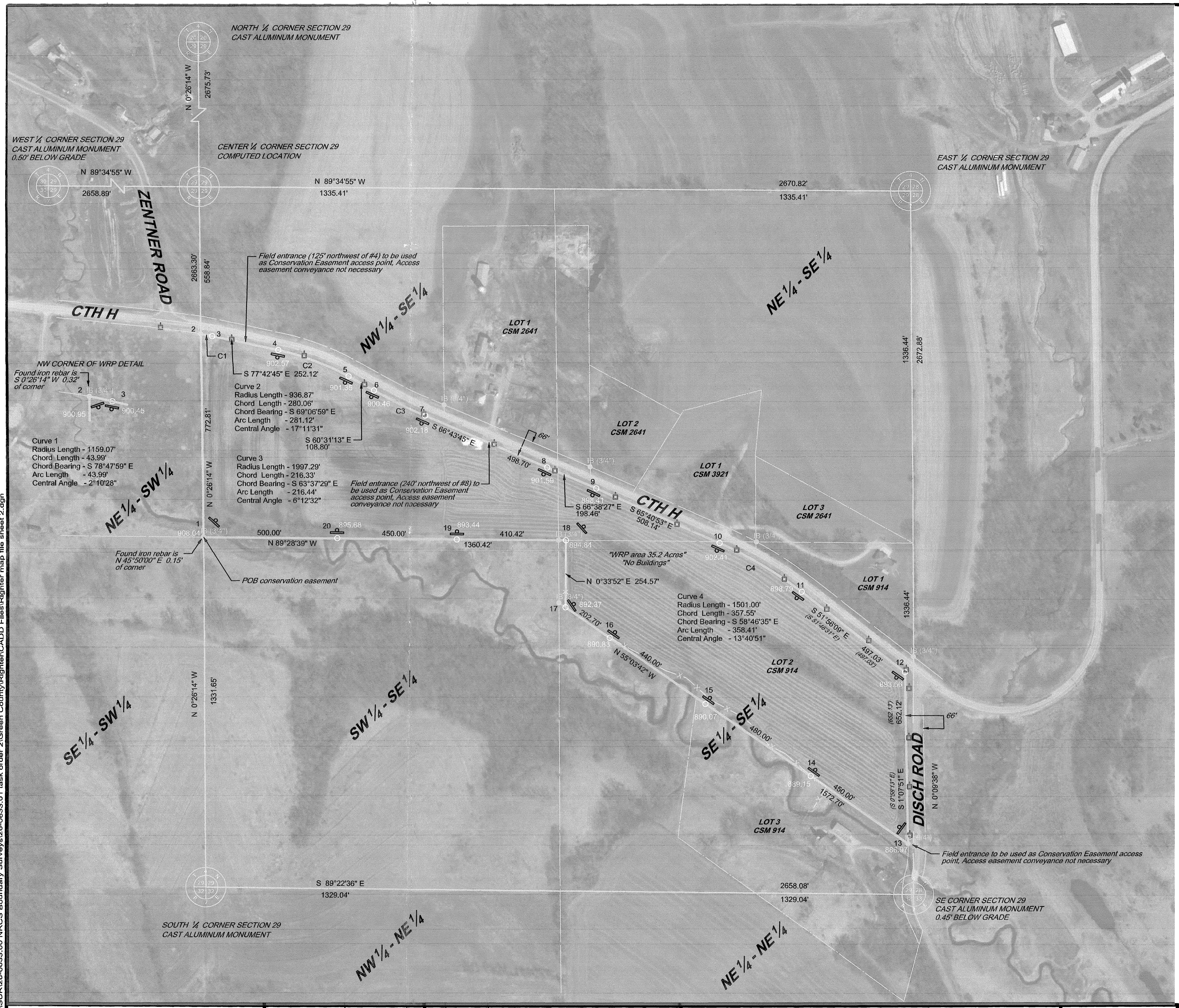
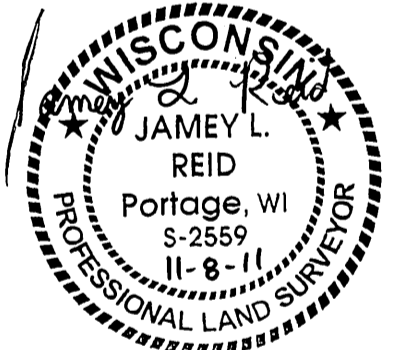


Filed April 30, 2012 Vol 13 Pg 65



Point	Northing	Easting	Latitude	Longitude
1	287638.64	2051208.80	42°47'19.58375"N	089°41'30.78004"W
2	288411.38	2051202.91	42°47'27.21677"N	089°41'30.82074"W
3	288402.84	2051246.05	42°47'27.13084"N	089°41'30.24259"W
4	288349.19	2051492.38	42°47'26.59190"N	089°41'26.94161"W
5	288249.36	2051754.03	42°47'25.59622"N	089°41'23.43748"W
6	288195.82	2051848.73	42°47'25.06390"N	089°41'22.17010"W
7	288099.72	2052042.53	42°47'24.10752"N	089°41'19.57579"W
8	287902.71	2052500.63	42°47'22.14461"N	089°41'13.44199"W
9	287824.03	2052682.82	42°47'21.36068"N	089°41'11.00257"W
10	287614.79	2053145.84	42°47'19.27665"N	089°41'04.80356"W
11	287429.45	2053451.58	42°47'17.43450"N	089°41'00.71272"W
12	287123.03	2053842.88	42°47'14.39311"N	089°40'55.48070"W
13	286471.08	2053855.75	42°47'07.95294"N	089°40'55.34145"W
14	286728.80	2053486.84	42°47'10.51245"N	089°41'00.27552"W
15	287003.68	2053093.37	42°47'13.24232"N	089°41'05.53821"W
16	287255.65	2052732.69	42°47'15.74461"N	089°41'10.36244"W
17	287371.69	2052566.58	42°47'16.89697"N	089°41'12.58427"W
18	287626.24	2052569.09	42°47'19.41122"N	089°41'12.53778"W
19	287629.98	2052158.71	42°47'19.46334"N	089°41'18.04121"W
20	287634.08	2051708.75	42°47'19.52041"N	089°41'24.07543"W



Note: The recorded description on the property of which the easement is located on is referenced in Title Commitment No. GR10733 by Chicago Title Insurance Company.

LEGEND	
FOUND IRON PIPE 1/2" (SIZE)	SECTION CORNER
FOUND IRON BAR 1/2" (SIZE)	TREE LINE
SET 3/4" X 24" IRON BAR WITH PLASTIC CAP STAMPED AYRES ASSOC RLS-2559	FENCE
SET METAL POST WITH USDA/NRCS SIGNAGE	WATER'S EDGE
SECTION LINE	UNDERGROUND ELECTRIC
SIXTEENTH LINE	OVERHEAD ELECTRIC
RIGHT OF WAY LINE	POWER POLE
PROPERTY LINE	TRANSFORMER
EXISTING EASEMENT	UNDERGROUND TELEPHONE
RECORDED AS DATA (N80°00'00"E) (123.87)	TELEPHONE POLE
PROPOSED ACCESS EASEMENT	TELEPHONE PEDESTAL
USDA/NRCS BOUNDARY	GAS UTILITY
	OVERHEAD UTILITY
	LATTICE TOWER
	SPOT ELEVATION

Ayres.pdf, platg EG, 1/10/2012 10:51 AM SURVEY\SUR\26-0633.00 NRCS Boundary Survey\26-0633.01 task order 2\Green County\Righter\CADD Files\Righter.mxd sheet 2.dgn

NRCS CONTRACT No. 66-5F48-10-00X6		SURVEY BY JV, JR		BOOK NO 479	
DR BY JR		JOB NO 26-0633.01		DATE 12/13/11	
CHK BY JF		DATE NOVEMBER 8, 2011		EDITS FROM NRCS REVIEW REVISION	

US DEPARTMENT OF AGRICULTURE  
RIGHTER FAMILY HOMESTEAD, LLC PROPERTY  
GREEN COUNTY, WISCONSIN



MAP OF BOUNDARY SURVEY  
OF USDA-NRCS WRP  
CONSERVATION EASEMENT

SHEET NO.  
2 OF 3