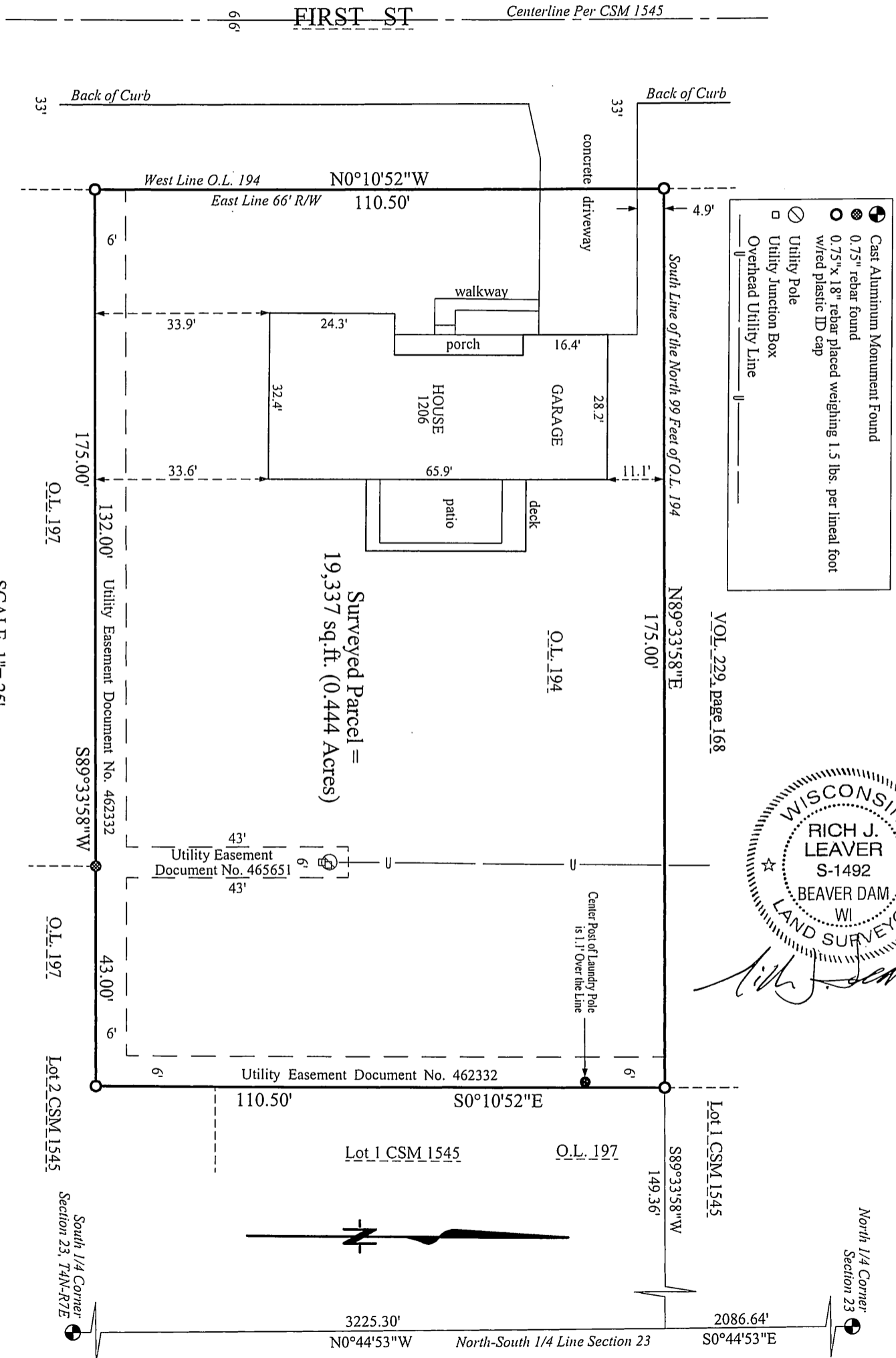


PLAT of SURVEY

Being Outlot 194 of the 1962 Revision of Part of the New Glarus Assessor's Plat, Except the North 99 Feet Located in the SE1/4-NW1/4 of Section 23, T4N-R7E, Village of New Glarus, Green County, Wisconsin



Filed Nov 5, 2010 Vol 15 pg 1



Bearings are referenced to the North-South 1/4 line of Section 23, T4N-R7E, with an assumed bearing of N0°44'53"W per Certified Survey Map No. 1545. Outlot (O.L.) designations refer to the 1962 Revision of Part of the New Glarus Assessor's Plat.