

Field July 9, 2009 UDR 12 of 59

SANITARY SEWER MANHOLES					
STRUCT. ID	RIM ELEVATION	INVERT	ELEVATION	PIPE SIZE	PIPE TYPE
SAN-1	1102.80	S	1097.60	8"	PVC
		NW	1097.67	6"	PVC
SAN-2	1103.65	SE	1098.11	6"	PVC
		NW	1097.95	6"	PVC
SAN-3	1106.62	NO ACCESS			
SAN-4	1108.48	SE	1098.11	6"	PVC
		NW	1098.01	6"	PVC
SAN-5	1108.23	W	1103.22	6"	PVC
SAN-6	1110.97	E	1101.94	10"	VP
		W	1101.69	10"	VP
		N-E	1103.12	6"	VP
		N-W	TO HOUSE - NOT ACCESSIBLE		
SAN-7	1116.99	S	1101.58	4"	PVC
		W	1111.78	6"	VP
SAN-8	1108.89	S	1111.54	6"	VP
		NE	1098.64	6"	PVC
		SW	1099.60	6"	PVC

STORM SEWER INLETS					
INLET ID	RIM ELEVATION	INVERT	ELEVATION	PIPE SIZE	PIPE TYPE
INL-1	1103.20	N	1101.15	12"	RCP
INL-2	1102.54	S	1098.64	12"	RCP
		N	1098.46	15"	RCP
		S	1097.55	15"	RCP
INL-3	1102.45	SW	1097.56	15"	RCP
		NE	1095.90	15"	RCP
INL-4	1109.09	W	1102.59	8"	RCP
		E	1104.37	15"	RCP
INL-5	1110.32	E	1106.40	8"	RCP
INL-6	1108.32	N	1102.89	8"	PVC
		SE	1101.09	12"	RCP
INL-7	1093.01	NW	1089.96	12"	RCP
INL-8	1085.56	SE	1080.86	18"	RCP
INL-9	1085.62	SE	1078.12	18"	RCP

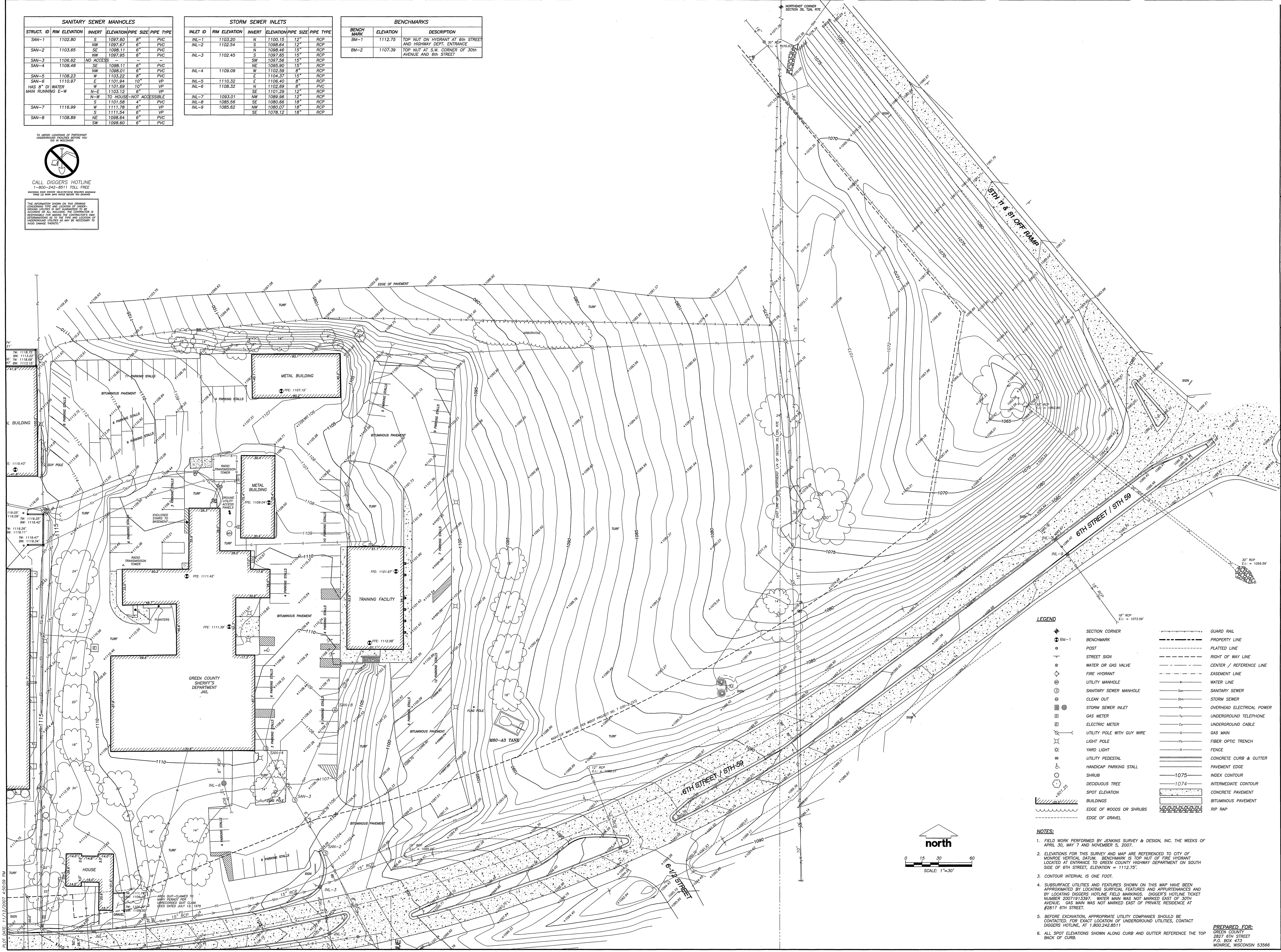
BENCHMARKS		
BENCH MARK	ELEVATION	DESCRIPTION
BM-1	1112.75	TOP NUT ON HYDRANT AT 6TH STREET AND HIGHWAY DEPT. ENTRANCE
BM-2	1107.39	TOP NUT AT S.W. CORNER OF 30th AVENUE AND 6th STREET

TO OBTAIN LOCATIONS OF PARTIAL UTILITY RECORDS, CONTACT THE CITY OF MONROE, MISSOURI, AT 1-800-242-8511 TOLL FREE.

CALL DIGGERS HOTLINE
1-800-242-8511 TOLL FREE

WHEN YOU HAVE A PROJECT, PLEASE ADVISE THE ADVISORY BOARD OF THE CITY OF MONROE, MISSOURI, AT 1-800-242-8511 TOLL FREE.

THE INFORMATION SHOWN ON THIS DRAWING IS THE PROPERTY OF JENKINS SURVEY & DESIGN, INC. AND IS TO BE USED ONLY FOR THE PROJECT AND SITE SPECIFICALLY IDENTIFIED THEREON. THE USER OF THIS DRAWING SHALL BE RESPONSIBLE FOR VERIFYING THE ACCURACY OF THE INFORMATION SHOWN ON THIS DRAWING. THE USER OF THIS DRAWING SHALL BE RESPONSIBLE FOR OBTAINING ALL NECESSARY PERMITS AND RECORDS FROM THE APPROPRIATE AGENCIES.



LEGEND	
	SECTION CORNER
	BENCHMARK
	STREET SIGN
	WATER OR GAS VALVE
	FIRE HYDRANT
	UTILITY MANHOLE
	SANITARY SEWER MANHOLE
	CLEAN OUT
	STORM SEWER INLET
	GAS METER
	ELECTRIC METER
	UTILITY POLE WITH GUY WIRE
	LIGHT POLE
	YARD LIGHT
	UTILITY PEDESTAL
	HANDICAP PARKING STALL
	SHRUB
	DECIDUOUS TREE
	SPOT ELEVATION
	BUILDINGS
	EDGE OF WOODS OR SHRUBS
	EDGE OF GRAVEL
	GUARD RAIL
	PROPERTY LINE
	PLATTED LINE
	RIGHT OF WAY LINE
	CENTER / REFERENCE LINE
	EASEMENT LINE
	WATER LINE
	SANITARY SEWER
	STORM SEWER
	OVERHEAD ELECTRICAL POWER
	UNDERGROUND TELEPHONE
	UNDERGROUND CABLE
	GAS MAIN
	FIBER OPTIC TRENCH
	FENCE
	CONCRETE CURB & GUTTER
	PAVEMENT EDGE
	INDEX CONTOUR
	INTERMEDIATE CONTOUR
	CONCRETE PAVEMENT
	BITUMINOUS PAVEMENT
	RIP RAP

NOTES:

- FIELD WORK PERFORMED BY JENKINS SURVEY & DESIGN, INC. THE WEEKS OF APRIL 30, MAY 7 AND NOVEMBER 5, 2007.
- ELEVATIONS FOR THIS SURVEY AND MAP ARE REFERENCED TO CITY OF MONROE VERTICAL DATUM. BENCHMARK IS TOP NUT OF FIRE HYDRANT LOCATED AT ENTRANCE TO GREEN COUNTY HIGHWAY DEPARTMENT ON SOUTH SIDE OF 6TH STREET, ELEVATION = 1112.75'.
- CONTOUR INTERVAL IS ONE FOOT.
- SUBSURFACE UTILITIES AND FEATURES SHOWN ON THIS MAP HAVE BEEN APPROXIMATED BY LOCATING SURFICIAL FEATURES AND APPURTENANCES AND BY LOCATING DIGGERS HOTLINE FIELD MARKINGS. DIGGERS HOTLINE TICKET NUMBERS 20071913397, WATER MAIN WAS NOT MARKED EAST OF 30TH AVENUE. GAS MAIN WAS NOT MARKED EAST OF PRIVATE RESIDENCE AT #2817 6TH STREET.
- BEFORE EXCAVATION, APPROPRIATE UTILITY COMPANIES SHOULD BE CONTACTED FOR EXACT LOCATION OF UNDERGROUND UTILITIES, CONTACT DIGGERS HOTLINE, AT 1.800.242.8511
- ALL SPOT ELEVATIONS SHOWN ALONG CURB AND GUTTER REFERENCE THE TOP BACK OF CURB.

PREPARED FOR:
GREEN COUNTY
2827 6TH STREET
P.O. BOX 473
MONROE, WISCONSIN 53566

JSD - Engineers & Surveyors
Jenkins Survey & Design, Inc.
161 HORIZON DRIVE, SUITE 101
VERONA, WISCONSIN 53593
PHONE: (608)948-5060

PROJECT NO: 06-2544
FILE NO: E-53
SURVEYED: SO/BG
F.B. NO/PG: 181/151
SHEET NO: 1 OF 1

DRAWN BY: SO
CHECKED BY: JK
APPROVED BY: DMA
DATE: 11-08-2007
DATE: 11-8-2007
DATE: 11-8-2007
DWGNAME: J:\2006\062544\Draw\06-2544-Execn (11-7-07).dwg
REVISION NO: _____
DATE: _____
DESCRIPTION: _____

TOPOGRAPHIC AND UTILITY MAP
PART OF THE NORTHEAST QUARTER OF SECTION 35, TOWN 2 NORTH, RANGE 7 EAST, TOWN OF MONROE, GREEN COUNTY JUSTICE CENTER, CITY OF MONROE, GREEN COUNTY, WISCONSIN