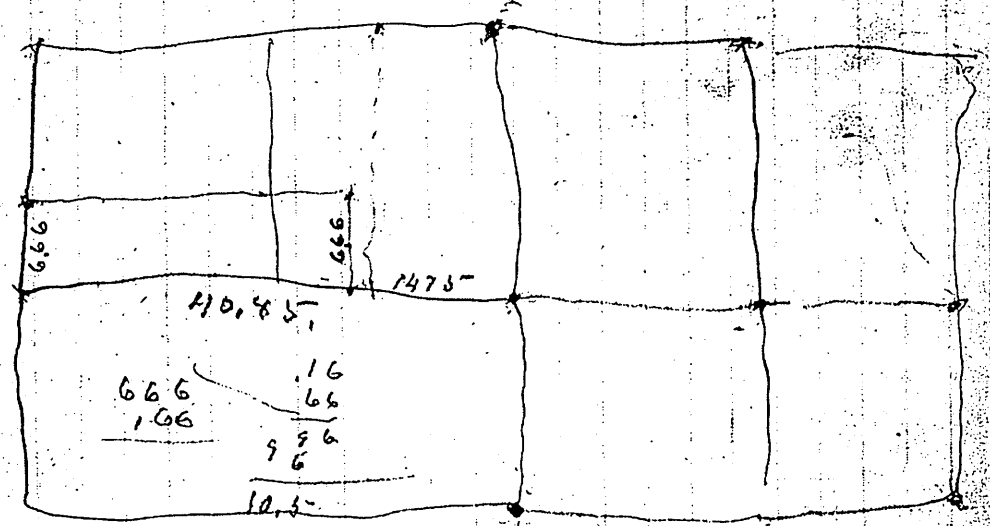


44 4-10-15-16-4-6 E  
 } then Front fence said by Ole Jensen when  
 of Christ had been to be the Cor. of above sections &  
 to main stave there over fifty years. Ole Jensen says he  
 has seen the section there, height 6.45 - and  
 Cor. Dec 15. War 6.45 - Height E was 6.45 -

45  
 439  
 1473  
 6.66  
 13.32



JF9-44, 45