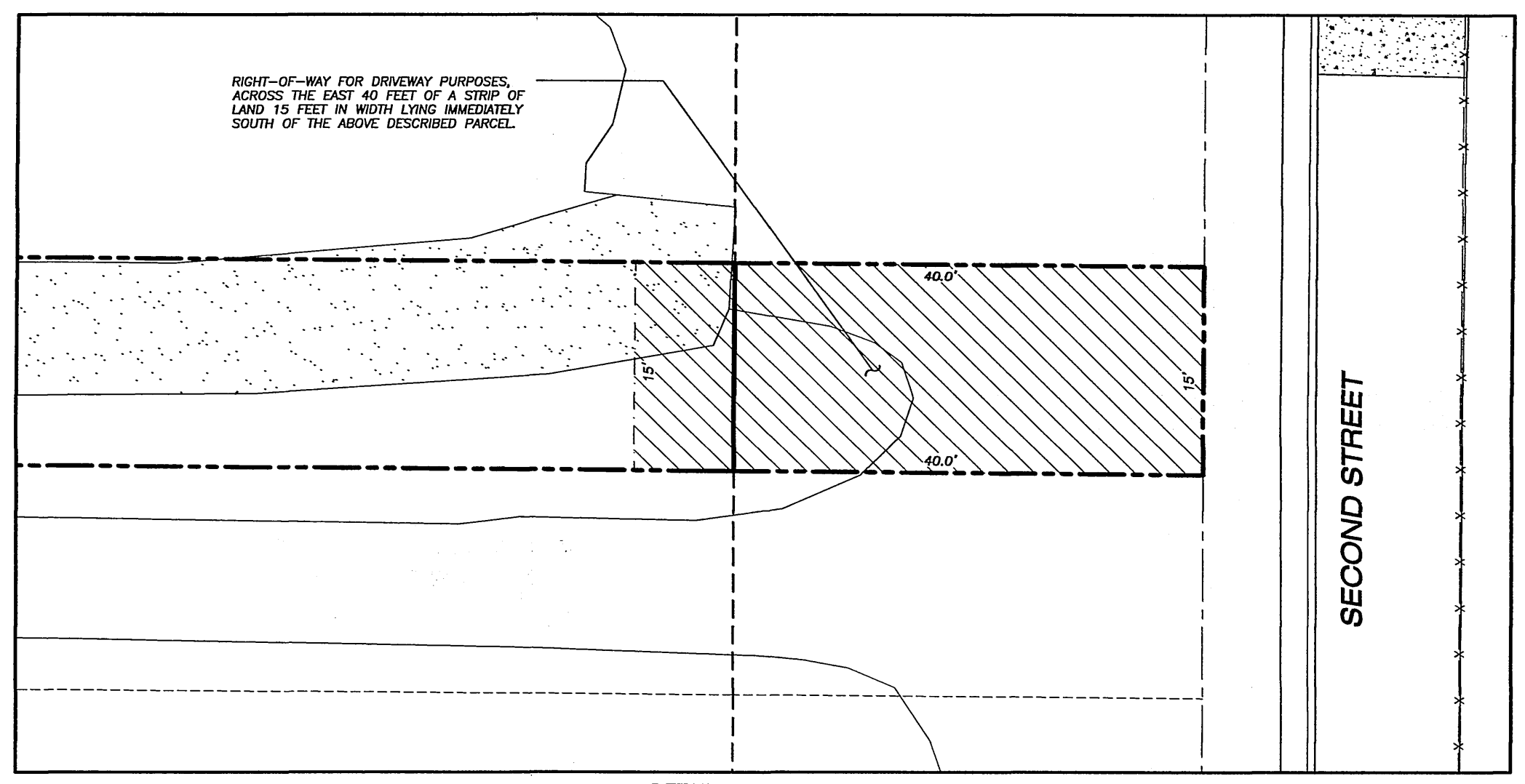
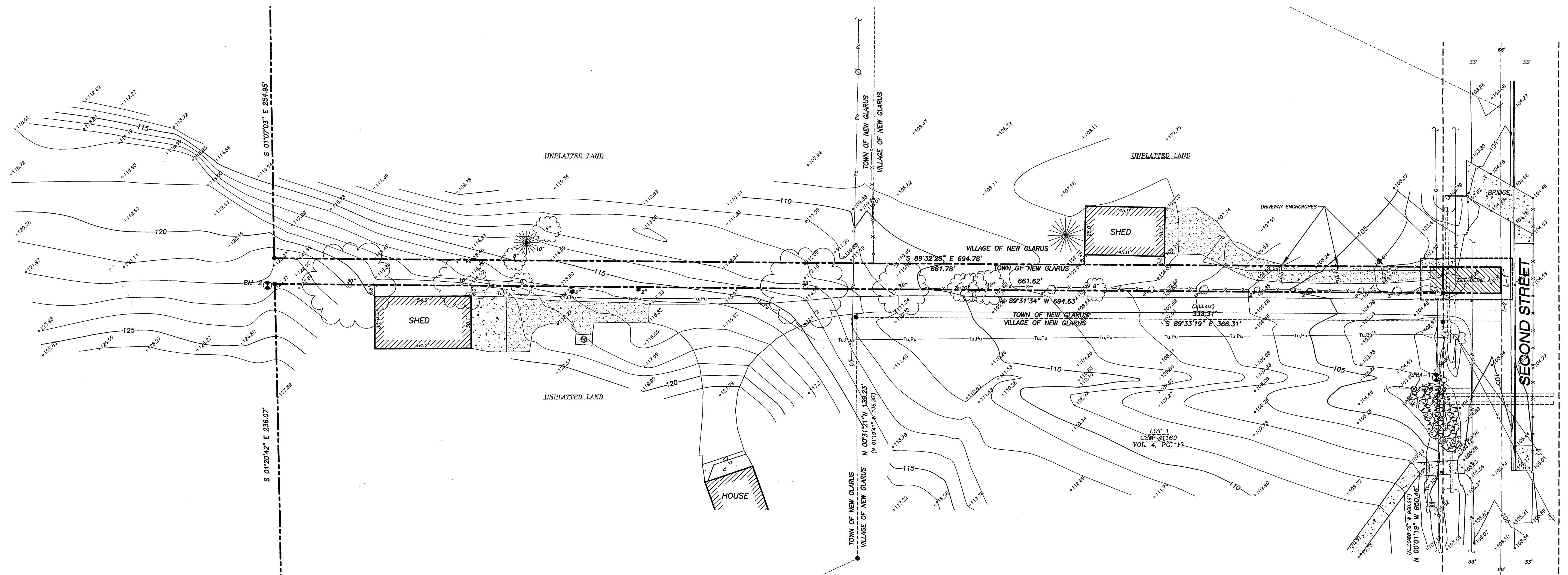


Field June 27, 2008 U&E pg. 35



BENCHMARK TABLE		
BENCH MARK	ELEVATION	DESCRIPTION
BM-1	105.76	TOP NUT OF FIRE HYDRANT
BM-2	122.11	TOP OF 3/4" REBAR

LINE TABLE		
LINE	BEARING	DISTANCE
L-1	S 00°01'19" E	15.00'
L-2	S 00°01'19" E	16.09'

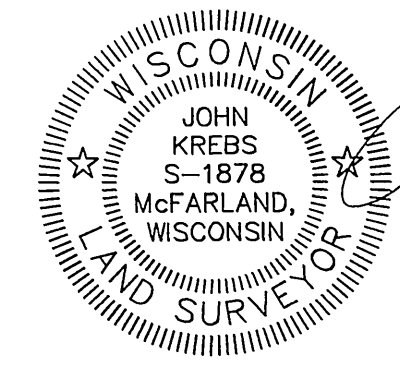
- LEGEND**
- 3/4" REBAR FOUND
 - ⊕ SIGN
 - ⊙ BM-1 BENCHMARK
 - ⊕ POWER POLE W/GUY
 - ⊕ LIGHT POLE
 - ⊕ HYDRANT
 - ⊕ WELL
 - ▨ FOUNDATION LINE
 - ▬ PARCEL BOUNDARY
 - ▬ PROPERTY LINE
 - ▬ RIGHT-OF-WAY LINE
 - ▬ CENTERLINE
 - ▬ EASEMENT LINE
 - x-x-x- FENCE LINE
 - - - EDGE OF PAVEMENT
 - - - NATURAL GAS
 - - - WATER LINE
 - - - UNDERGROUND TELEPHONE
 - - - OVERHEAD ELECTRIC
 - - - UNDERGROUND ELECTRIC
 - - - INDEX CONTOUR
 - - - INTERMEDIATE CONTOUR
 - ▨ BITUMINOUS PAVEMENT
 - ▨ CONCRETE PAVEMENT
 - ▨ RIP RAP
 - ▨ GRAVEL

- NOTES**
- BOUNDARY, TOPOGRAPHIC AND UTILITY SURVEY (EXISTING CONDITIONS SURVEY) PERFORMED BY JSD PROFESSIONAL SERVICES, INC. ON JUNE 10, 2008.
 - BEARINGS FOR THIS SURVEY AND MAP ARE REFERENCED TO THE NORTH LINE OF LOT 1, C.S.M. No. 1169, RECORDED AS S 89°33'19" E.
 - ELEVATIONS FOR THIS SURVEY AND MAP ARE BASED ON THE CONCRETE MONUMENT WITH BRASS CAP MARKING THE SOUTH 1/4 CORNER OF SECTION 23-4-7, ASSUMED TO BE 100.00.
 - CONTOUR INTERVAL IS ONE FOOT.
 - SUBSURFACE UTILITIES AND FEATURES SHOWN ON THIS MAP HAVE BEEN APPROXIMATED BY LOCATING SURFICIAL FEATURES AND APPURTENANCES, LOCATING DIGGERS HOTLINE FIELD MARKINGS AND BY REFERENCE TO UTILITY RECORDS AND MAPS, DIGGERS HOTLINE TICKET NUMBER 20082118458 AND 20082118492.
 - BEFORE EXCAVATION, APPROPRIATE UTILITY COMPANIES SHOULD BE CONTACTED. FOR EXACT LOCATION OF UNDERGROUND UTILITIES, CONTACT DIGGERS HOTLINE, AT 1.800.242.8511.
 - THE ACCURACY OF THE BENCHMARKS SHOWN ON THIS MAP SHALL BE VERIFIED BEFORE BEING UTILIZED. JSD PROFESSIONAL SERVICES, INC., DOES NOT WARRANT THE ACCURACY OF THESE BENCHMARKS.
 - THIS PARCEL IS SUBJECT TO ALL EASEMENTS AND AGREEMENTS, BOTH RECORDED AND UNRECORDED.

SURVEYOR'S CERTIFICATE:
 I, JOHN KREBS, REGISTERED LAND SURVEYOR, HEREBY CERTIFY THAT THIS EXISTING CONDITIONS SURVEY AND MAP IS CORRECT TO THE BEST OF MY KNOWLEDGE AND BELIEF IN ACCORDANCE WITH THE INFORMATION PROVIDED.

John Krebs
 JOHN KREBS, S-1878
 REGISTERED LAND SURVEYOR

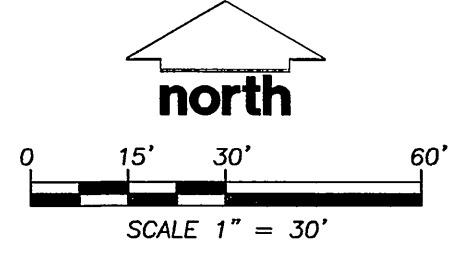
June 17, 2008
 DATE



PREPARED FOR:
 FOUR OAKS FARM, LLC
 P.O. BOX 768
 NEW GLARUS, WI 53574

EXISTING CONDITIONS SURVEY		DATE	06-16-2008
PART OF THE NORTHWEST QUARTER (NW 1/4) OF THE SOUTHWEST QUARTER (SW 1/4) OF SECTION 23, TOWN 4 NORTH, RANGE 7 EAST, NEW GLARUS TOWNSHIP, GREEN COUNTY, WISCONSIN		CHECKED BY	SO
JSD - Engineers & Surveyors Jenkins Survey & Design, Inc. 161 HORIZON DRIVE, SUITE 101 VERONA, WISCONSIN 53593 PHONE: (608)948-5060		APPROVED BY	DMJ
PROJECT NO.: 06-2262'B'		DRAWN BY	JK
FILE NO.: C-193		DATE	06-16-2008
SURVEYED: JK		DATE	06-17-2008
F.B. NO./PG.: 269/72		DRAWING NAME	U&E 062262-Exempt B' dwg
SHEET NO.: 1 OF 1		REVISION NO.	
		DESCRIPTION	
		DATE	
		BY	

TO OBTAIN LOCATIONS OF PARTICIPANT UNDERGROUND FACILITIES BEFORE YOU DIG IN WISCONSIN
 CALL DIGGERS HOTLINE
 1-800-242-8511 TOLL FREE
 WISCONSIN STATE STATUTE 183.02(2)(a) REQUIRES MINIMUM THREE (3) WORK DAYS NOTICE BEFORE YOU EXCAVATE



Jun 17, 2008 - 8:59am - J:\2008\062262.dwg - 062262-Exempt B' dwg - Printed by: JK