

# TOPOGRAPHIC MAP

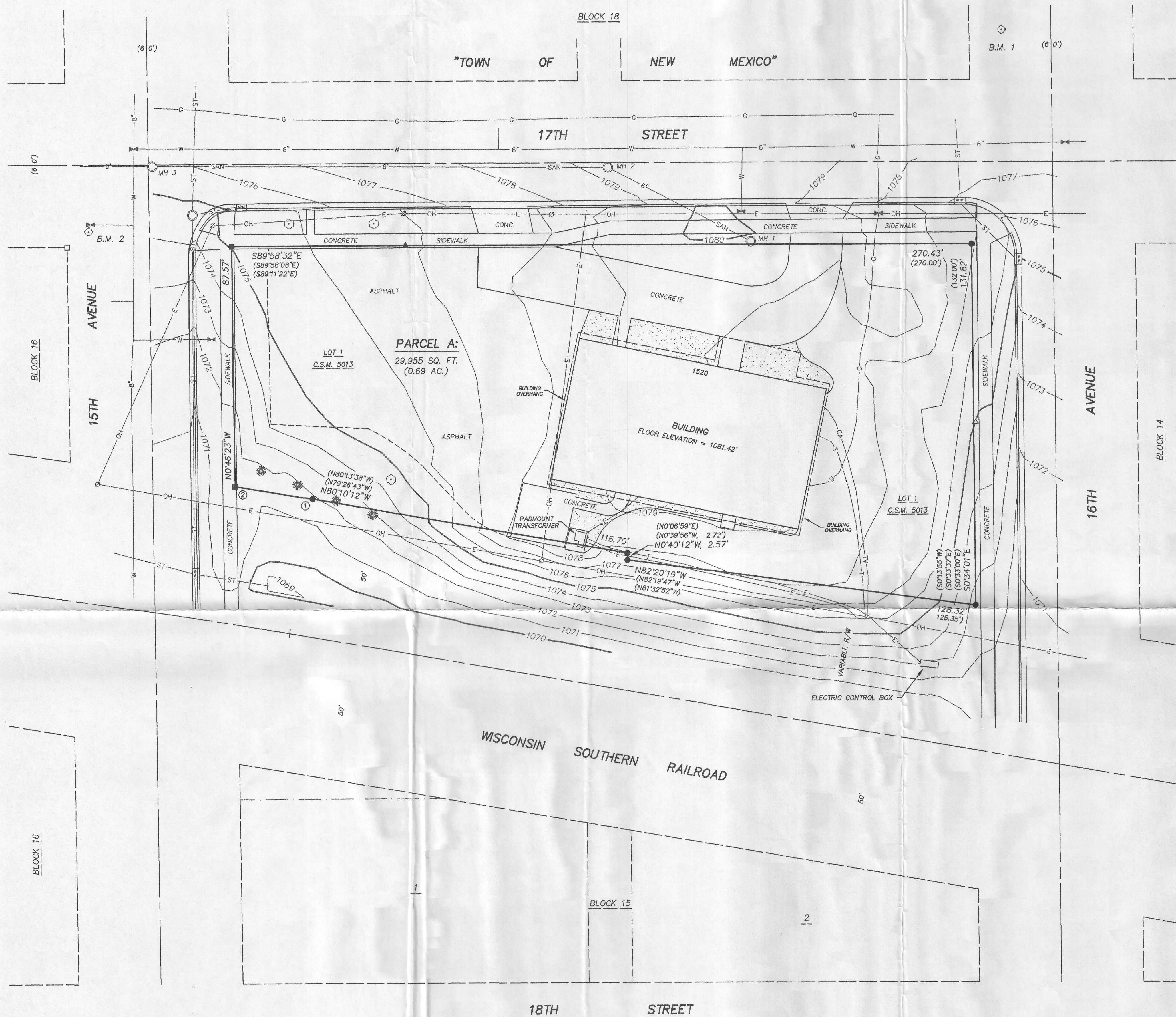
Lot 1 of Certified Survey Map No. 5013, Recorded in Volume 23 of Certified Survey Maps of Green County, on Pages 77, 78 & 79, as Document No. 576220, being part of Fractional Lot 4 of Section 2, Township 1 North, Range 7 East, City of Monroe, Green County, Wisconsin.

I, Todd E. Hasse, Professional Land Surveyor, S-2228, hereby certify that I have made this Topographic Map under the direction of Gail D. Zeitler, Executive Director of Foreign Type Cheesemaker's Association and that I have surveyed, monumented and mapped the lands described hereon and that this map is a correct representation thereof in accordance with the information that was provided.

December 12th, 2016



*Todd E. Hasse*  
Todd E. Hasse P.L.S. - 2228



### LEGEND:

- 3/4" solid round iron rod found.
- ▲ Chisel cross in concrete found.
- Brass survey marker found.
- 1 1/2" iron pipe found.
- Sanitary Sewer Manhole.
- Storm Sewer Manhole.
- ☒ Storm Sewer Inlet.
- ⊙ Deciduous Tree.
- ⊙ Evergreen Tree.
- △ Monitoring Well.
- ⊙ Water Valve.
- ▭ Miscellaneous Landscaped Area.
- CA-TV- Underground Cable Television.
- SAN- Sanitary Sewer (size noted).
- W- Water Main (size noted).
- G- Underground Gas Main.
- T- Underground Telephone.
- E- Underground Electric.
- OH-E- Overhead Electric.
- ST- Storm Sewer.
- ⊙ Utility Pole.
- ⊙ Gas Valve.

CONTOUR INTERVAL = 1'

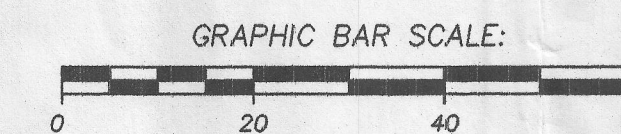
### SANITARY SEWER TABLE:

Sanitary Manhole 1  
Rim = 1080.14'  
Invert NW = 1074.74'

Sanitary Manhole 2  
Rim = 1079.29'  
Invert SE = 1072.59'  
Invert NE = 1074.09'  
Invert W = 1072.04'

Sanitary Manhole 3  
Rim = 1075.68'  
Invert E = 1068.58'  
Invert W = 1068.33'

SCALE: 1" = 20'



### CURVE DATA:

CURVE	RADIUS	INT. ANGLE	ARC	CHORD	CHORD BEARING	TANGENT BEARING
1-2	2914.79'	0°33'54"	28.76'	28.76'	N80°27'09"W	⊙ N80°44'06"W

### BENCHMARK INFO:

B.M. 1: Hydrant, NW Bonnet Bolt = 1084.05'  
B.M. 2: Hydrant, W Bonnet Bolt = 1076.88'

### NOTES:

- Bearings and distances shown in parenthesis, indicates recorded as data.
- Bearings are referenced to the Westerly right-of-way line of 16th Avenue, which bears S0°34'01"E, according to the Green County Coordinate System, as defined by the Wisconsin Department of Transportation and determined by GPS observation, 2007 Adjustment.
- The locations of the utilities as shown on the drawing were field located based upon visible above ground structures and upon markings on the ground placed by utility companies and/or their agents. No warranty is given to the utility markings by others or that all underground utilities affecting this property were marked and subsequently located for this survey. A locate request was sent to Digger's Hotline, Ticket Number 20162518894.

### PREPARED FOR:

Foreign Type Cheesemaker's Association  
c/o Executive Director Gail D. Zeitler  
1520 17th Street  
Monroe, WI 53566  
(608) 325-2507

JOB NO. 16066  
DRAWING C:\DRAWINGS\PLATS\16066.DWG

**HASSE**  
**SURVEYING, LLC**  
W5820 ILIFF ROAD  
MONROE, WI 53566  
(608) 325-5321 PHONE  
(608) 329-5321 FAX

JWH Dec. 29, 2016 UTM 15 pg 70