

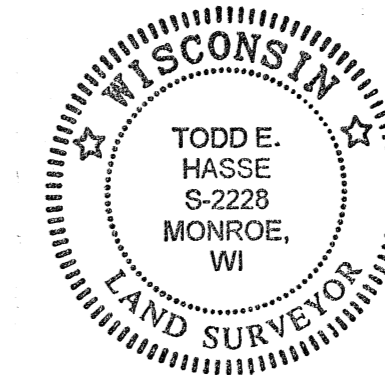
TOPOGRAPHIC MAP

PART OF THE SW 1/4 & NW 1/4 OF SECTION 2 AND PART OF THE NE 1/4 & SE 1/4 OF SECTION 3, TOWNSHIP 1 NORTH, RANGE 7 EAST, CITY OF MONROE, GREEN COUNTY, WISCONSIN.

I, Todd E. Hasse, Professional Land Surveyor, S-2228, hereby certify that I have made this Topographic Map under the direction of Randall Bader of Carousel Farms and that I have surveyed and mapped the lands described hereon and that this map is a correct representation thereof in accordance with the information that was provided.

September 18th, 2015

Todd E. Hasse
Todd E. Hasse P.L.S. - 2228



LEGEND:

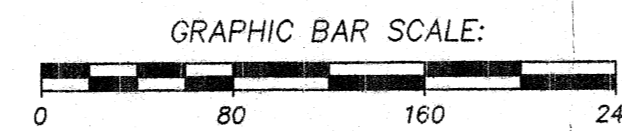
- Cast Aluminum Monument Found.
- Wisconsin DOT Aluminum Cap Found.
- 2 1/2" Iron Pipe Found.
- 1" Iron Pipe Found.
- 5/8" Solid Round Iron Rod Found.
- 3/4" Solid Round Iron Rod Found.
- 1 1/4" Solid Round Iron Rod Found.
- Sanitary Sewer Main (size noted).
- Storm Sewer (size noted).
- Water Main (size noted).
- Underground Telephone.
- Underground Gas Main.
- Underground Electric.
- Sanitary Force Main.
- Overhead Electric.
- Existing Fence Line.
- Tree Outline.
- Telephone Pedestal.
- Sanitary Manhole.
- Storm Manhole.
- Storm Inlet.
- Water Valve.
- Hydrant.
- Power Pole.
- Evergreen Tree.
- Deciduous Tree.

CONTOUR INTERVAL = 1'

BENCHMARK INFORMATION:

Northwest Bonnet Bolt of Hydrant #367 Elevation = 1059.01'
Northwest Bonnet Bolt of Hydrant #339 Elevation = 1057.71'
Northwest Bonnet Bolt of Hydrant #337 Elevation = 1051.40'

SCALE: 1" = 80'



BOUNDARY AND TOPOGRAPHIC SURVEY
BY: JEROME KAISER
DATED: 1-1999

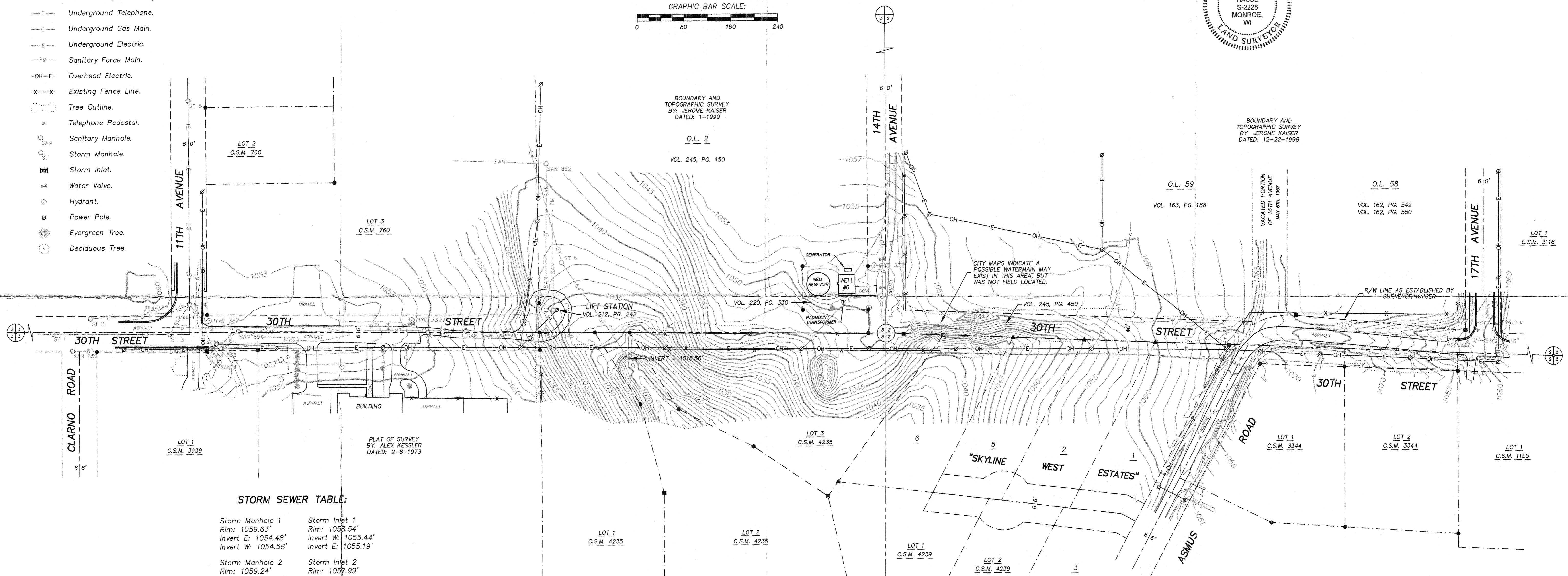
O.L. 2
VOL. 245, PG. 450

BOUNDARY AND TOPOGRAPHIC SURVEY
BY: JEROME KAISER
DATED: 12-22-1898

O.L. 59
VOL. 163, PG. 188

O.L. 58
VOL. 162, PG. 549
VOL. 162, PG. 550

LOT 1
C.S.M. 3116



STORM SEWER TABLE:

Storm Manhole 1 Rim: 1059.63' Invert E: 1054.48' Invert W: 1054.58'	Storm Inlet 1 Rim: 1058.54' Invert W: 1055.44' Invert E: 1055.19'
Storm Manhole 2 Rim: 1059.24' Invert E: 1055.94' Invert W: 1056.04'	Storm Inlet 2 Rim: 1057.99' Invert NW: 1055.19' Invert S: 1055.24'
Storm Manhole 3 Rim: 1058.93' Invert W: 1053.48' Invert NE: 1053.53'	Storm Inlet 3 Rim: 1058.31' Invert N: 1055.41'
Storm Manhole 4 Rim: 1058.55' Invert N: 1052.30' Invert SE: 1054.45' Invert SW: 1052.45' Invert W: 1054.25'	Storm Inlet 4 Rim: 1061.87' Invert S: 1058.62' Invert E: 1058.57'
Storm Manhole 5 Rim: 1055.77' Invert S: 1049.17'	Storm Inlet 5 Rim: 1060.99' Invert E: 1056.49'
Storm Manhole 6 Rim: 1040.90' Invert N/S: 1024.20'	Storm Inlet 6 Rim: 1059.94' Invert N: 1055.64' Invert S: 1055.54' Invert W: 1055.59'
Storm Manhole 7 Rim: 1059.30' Invert N: 1055.15' Invert E: 1055.00' Invert W: 1054.95'	

SANITARY SEWER TABLE:

Sanitary Manhole 856 Rim: 1059.24' Invert E: 1051.94'	Sanitary Manhole 855 Rim: 1058.47' Invert W: 1051.17' Invert E: 1051.07' Invert S: 1051.77'	Sanitary Manhole 1 Rim: 1057.86' Invert N: 1052.36' Inverts S: 1052.46'	Sanitary Manhole 854 Rim: 1058.68' Invert W: 1050.88' Invert E: 1050.78'
Sanitary Manhole 853 Rim: 1055.35' Invert W: 1049.50' Invert E: 1049.30'	Sanitary Manhole 1344 Rim: 1051.58' Invert W: 1042.68' Invert E: 1042.98' Invert SW: 1043.28'	Sanitary Manhole 1345 Rim: 1037.80' Invert W: 1024.00' Invert N: 1023.85'	Sanitary Manhole 852 Rim: 1041.82' Invert S: 1024.42' Invert W: 1024.52'

SECTION LINE TABLE:

W 1/4 COR TO CENTER OF SECTION 2 S87°57'46"E, 2620.75' (S87°50'38"E, 2620.60') (S87°45'56"E, 2622.12') (S88°13'42"E, 2620.69') (S88°51'36"E)	W 1/4 COR TO NW COR OF SECTION 2 N0°06'55"W, 4182.76' (N2°04'55"W, 4182.69')	W 1/4 COR TO SW COR OF SECTION 2 S0°07'43"W, 2669.87' (S0°15'00"W, 2669.88') (S0°15'12"W, 2669.82')	E 1/4 COR TO CENTER OF SECTION 3 N89°43'26"W, 2657.67' (N89°36'14"W, 2657.68') (N89°59'45"W, 2657.82') (S88°18'51"W)
---	--	--	--

NOTES:

- Bearings and distances shown in parenthesis, indicates recorded as data.
- Ekum Abstract & Title had conducted a 60 year search on the parcels for the School District properties and for Well No. 6 and the Lift Station properties owned by the City of Monroe.
- Bearings are referenced to the West line of the SW 1/4 of Section 2, which bears S0°07'43"W, according to the Green County Coordinate System, as defined by the Wisconsin Department of Transportation and determined by GPS observation, 2007 Adjustment.
- The locations of the utilities as shown on the drawing were field located based upon visible above ground structures and upon markings on the ground placed by utility companies and/or their agents. No warranty is given to the utility markings by others or that all underground utilities affecting this property were marked and subsequently located for this survey. A locate request was sent to Digger's Hotline, Ticket Numbers 20153317314 & 20153317326.

PREPARED FOR:

Carousel Farms
c/o Randall Bader
W7210 C.T.H. B
Monroe, WI 53566
(608) 325-3722

T. Hasse Nov. 2, 2015 Vol 15 Pg 4