

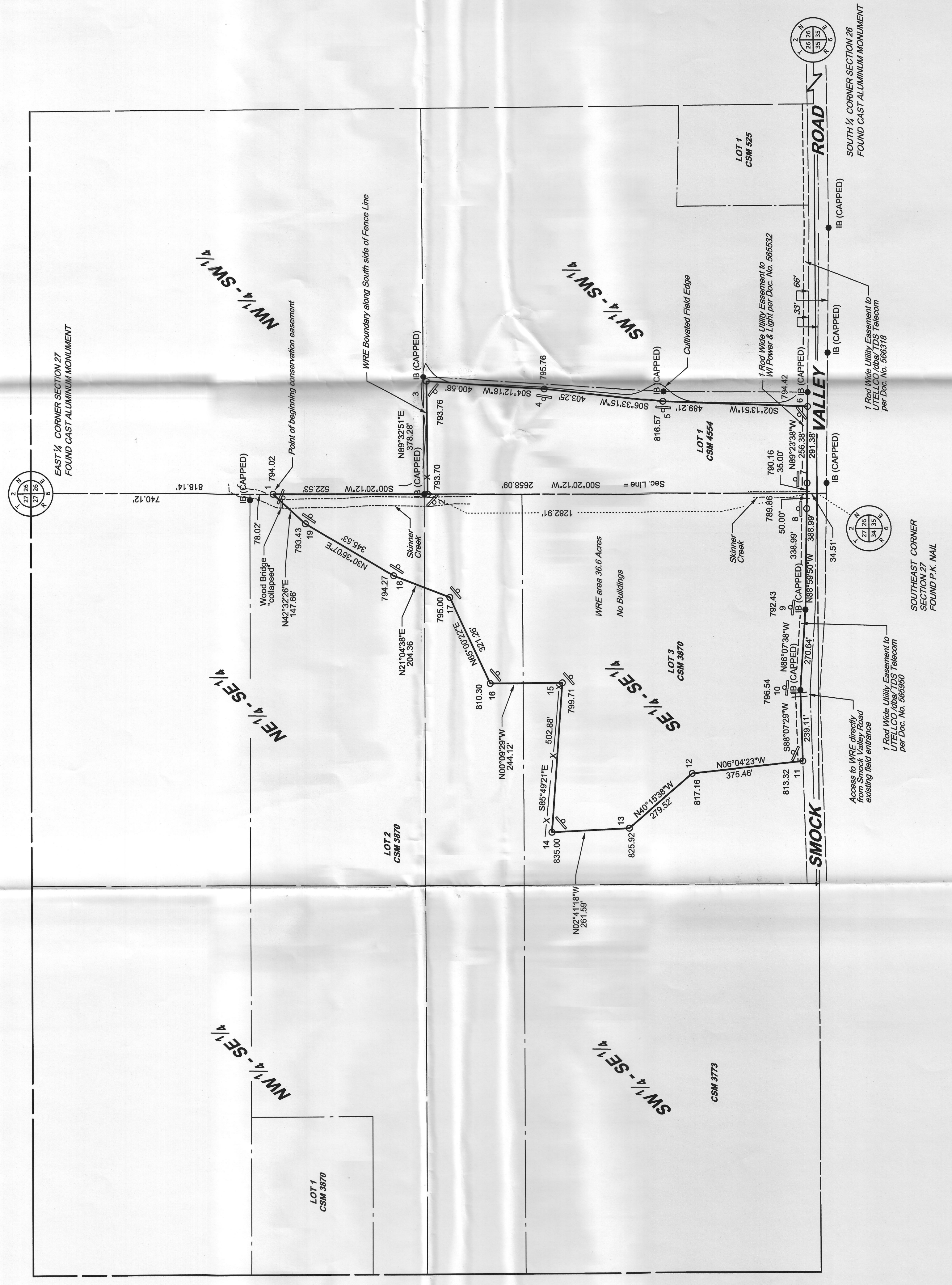
Point	Northing	Easting	Latitude	Longitude
1	224507.72	2033284.10	42°36'56.58633" N	89°45'33.61284" W
2	223985.21	2033281.02	42°36'51.42531" N	89°45'33.67420" W
3	223988.20	2033659.29	42°36'51.44403" N	89°45'28.61545" W
4	223188.09	2033629.91	42°36'47.49879" N	89°45'29.02385" W
5	222895.28	2033583.89	42°36'43.54307" N	89°45'29.65480" W
6	222701.96	2033584.84	42°36'38.71517" N	89°45'29.92850" W
7	222703.22	2033308.48	42°36'38.74817" N	89°45'33.35651" W
8	222709.15	2033223.48	42°36'38.76404" N	89°45'34.49311" W
9	222727.43	2032884.56	42°36'38.83224" N	89°45'39.02503" W
10	222719.61	2032375.56	42°36'38.02043" N	89°45'42.63512" W
11	223092.96	2032335.84	42°36'42.63882" N	89°45'46.34608" W
12	223505.26	2032142.92	42°36'44.75076" N	89°45'48.75575" W
13	223567.56	2032155.19	42°36'47.33211" N	89°45'49.90922" W
14	223530.93	2032043.79	42°36'46.95619" N	89°45'42.20985" W
15	223775.05	2032584.56	42°36'50.58195" N	89°45'38.30494" W
16	224101.47	2033008.48	42°36'52.68182" N	89°45'37.31483" W
17	224596.93	2033184.26	42°36'55.51460" N	89°45'34.95223" W

Note: The recorded description on the property of which the easement is located on is referenced in File No. X-73804 by Chicago Title Insurance Company with an effective date of October 20, 2014.



LEGEND

FOUND IRON PIPE	IP (SIZE)	SECTION CORNER	FENCE	X	X	X
FOUND IRON BAR	IB (SIZE)	SECTION CORNER	WATERS EDGE	---	---	---
SET 3/4" X 3/4" CAPPED IRON REBAR WITH PLASTIC CAP STAMPED AT RES. ASSOC. PL-S-2659	○	SECTION CORNER	UNDERGROUND ELECTRIC	---	---	---
METAL POST WITH USDA/NRCS SIGNAGE	SET	SECTION CORNER	OVERHEAD ELECTRIC	---	---	---
SECTION LINE	---	SECTION CORNER	POWER POLE	□	□	□
QUARTER LINE	---	SECTION CORNER	UNDERGROUND TELEPHONE	---	---	---
SIXTEENTH LINE	---	SECTION CORNER	TELEPHONE POLE	○	○	○
RIGHT OF WAY LINE	---	SECTION CORNER	GAS UTILITY	---	---	---
PROPERTY LINE	---	SECTION CORNER	OVERHEAD UTILITY	---	---	---
EXISTING EASEMENT	---	SECTION CORNER	LATTICE TOWER	⊠	⊠	⊠
RECORDED AS DATA (N89°00'00"E 123.87')	---	SECTION CORNER	SPOT ELEVATION	±	±	±
PROPOSED ACCESS EASEMENT	---	SECTION CORNER	USDA/NRCS BOUNDARY	---	---	---



NRCS CONTRACT No. 54-5F48-14-01GQ2		AYRES ASSOCIATES MADISON, WISCONSIN	MAP OF BOUNDARY SURVEY OF USDA-NRCS ACEP WETLAND RESERVE EASEMENT	SHEET NO. 3 OF 3
SURVEY BY JV	BOOK NO 711	DATE August 20, 2015	NO	REVISION
DR BY JR	JOB NO 26-0053.08			
CHK BY JF				

Filed Feb. 25, 2016 Vol 15 pg. 22