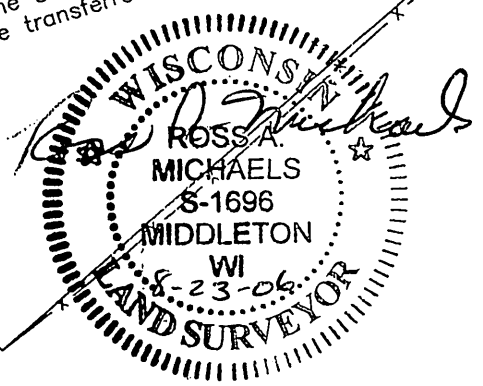
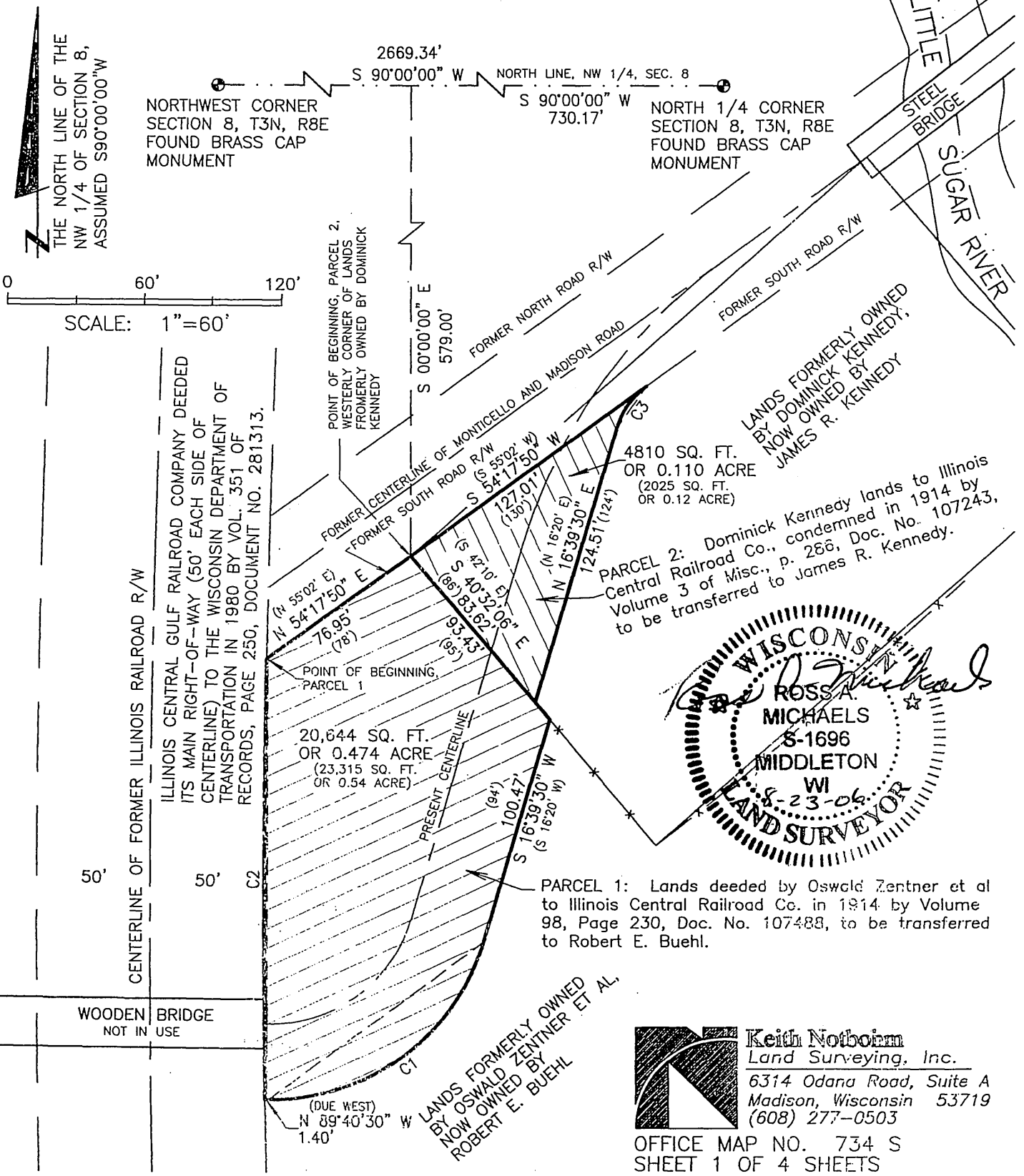


PLAT OF SURVEY – PROPOSED LAND TRANSFERS

Located in the NE 1/4 of the NW 1/4 of Section 8,
T3N, R8E, Town of Mt. Pleasant, Green County, Wisconsin

Filed Nov. 27, 2006 Vol 11 page 116



Keith Notbohm
 Land Surveying, Inc.
 6314 Odana Road, Suite A
 Madison, Wisconsin 53719
 (608) 277-0503

OFFICE MAP NO. 734 S
 SHEET 1 OF 4 SHEETS