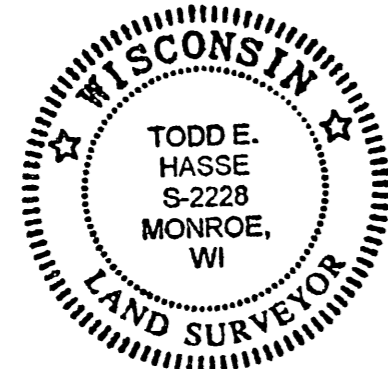


TOPOGRAPHIC MAP

Lot 2 of Certified Survey Map No. 1298, Recorded in Volume 4 of Certified Survey Maps of Green County, on Pages 177 and 178, being part of the SW 1/4 of the SW 1/4 of Section 34, Town 2 North, Range 7 East, City of Monroe, Green County, Wisconsin.

I, Todd E. Hasse, Registered Land Surveyor, S-2228, hereby certify that I have made this Topographic Map under the direction of Ron Schaaf and that I have surveyed, monumented and mapped the lands described hereon and that this map is a correct representation thereof in accordance with the information provided.

July 11th, 2005



Todd E. Hasse
Todd E. Hasse R.L.S. - 2228

NOTES:

- The elevations are referenced to the City of Monroe benchmark system.
- Bearings are referenced to the N. line of Lot 2 of Certified Survey Map No. 1298, which was assumed to bear N89°43'14"E.

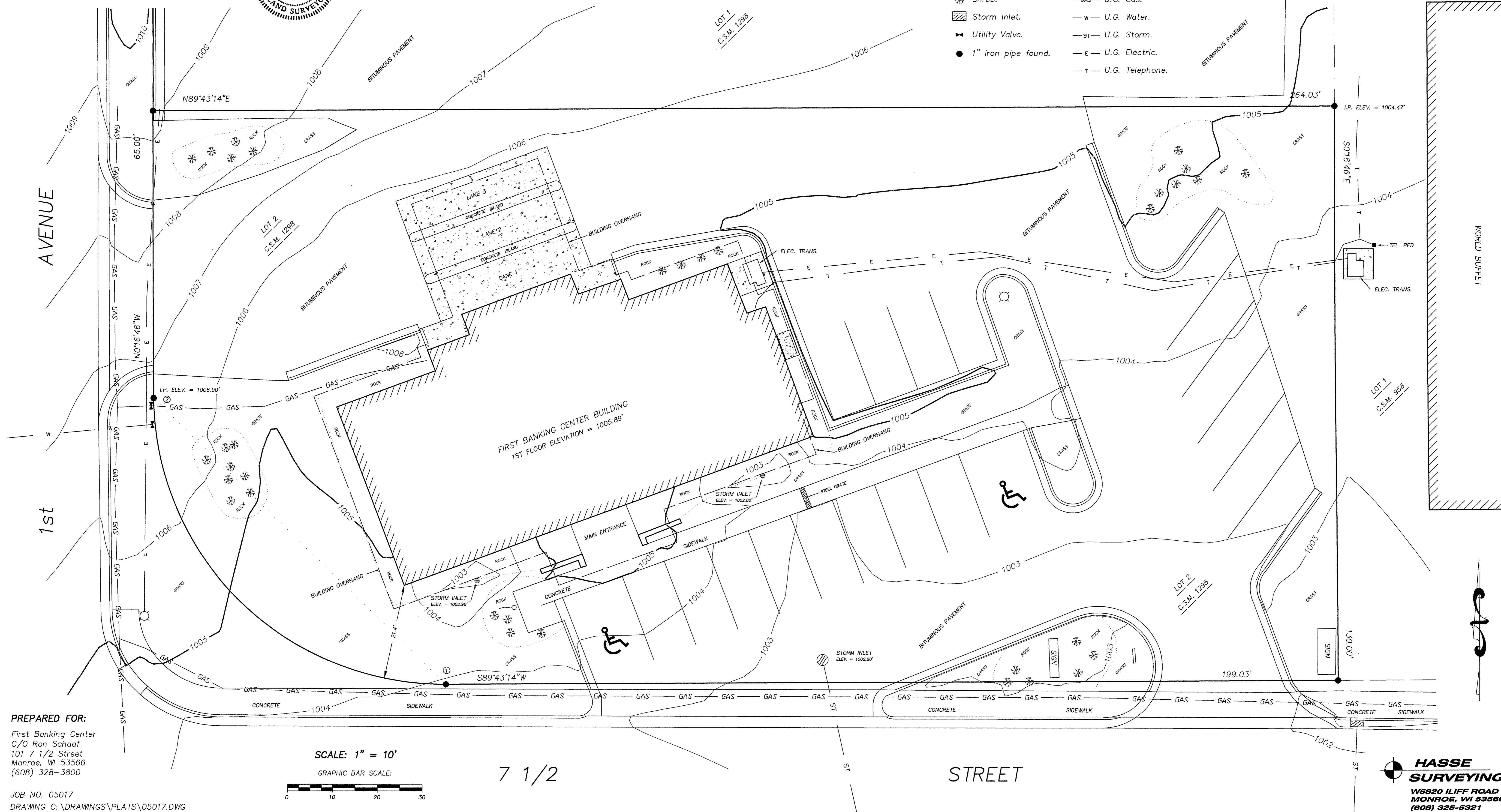
CURVE DATA:

CURVE	RADIUS	INT. ANGLE	ARC	CHORD	CHORD BEARING
1-2	65.00'	90°00'00"	102.10'	91.92'	N45°16'46"W

CONTOUR INTERVAL = 1'

LEGEND:

- Light.
- Shrub.
- Storm Inlet.
- Utility Valve.
- 1" iron pipe found.
- Concrete.
- U.G. Gas.
- U.G. Water.
- U.G. Storm.
- U.G. Electric.
- U.G. Telephone.

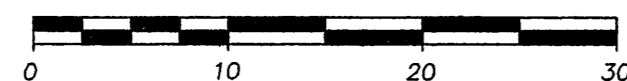


PREPARED FOR:

First Banking Center
C/O Ron Schaaf
101 7 1/2 Street
Monroe, WI 53566
(608) 328-3800

SCALE: 1" = 10'

GRAPHIC BAR SCALE:



7 1/2

STREET

JOB NO. 05017
DRAWING C: \DRAWINGS\PLATS\05017.DWG

HASSE SURVEYING
WS820 ILIFF ROAD
MONROE, WI 53566
(608) 325-5321

Hand July 18, 2005 over 11 pages 12